

TECHNOLOGICAL EDUCATIONAL INSTITUTION OF LARISSA



UNDERGRADUATE PROSPECTUS

LARISSA 2007

Editor

Vassiliki Kapralou

Lecturer

T.E.I. of Larissa

Translation

Vassiliki Kapralou



Design

Maria Karatasiou

T.E.I. of Larissa



Print



Copyright: T.E.I. of Larissa

411 10 Larissa

+30 2410-684200

www.teilar.gr

Contents

A Preface by the President	5
Larissa – the city	6
Larissa – the Prefecture	10
T.E.I. of Larissa – Foundation & Mission	12
T.E.I. of Larissa – Organisation & Structure – Human Resources	13
T.E.I. of Larissa – Location & Premises	14
Academic Organisation Chart	16
Studies	17
Student Welfare	19
Library	20
Career Office	22
European Programmes Office	24
Centre of Foreign Languages & Physical Education	26
Data Network Services	28
Life-Long Learning Institute	29
Postgraduate Studies	30
Technological Research Centre of Thessaly	32
School of Business & Economics	33
Department of Accounting	34
Department of Business Administration	36
Department of Tourism Enterprises	38
Department of Project Management	40
School of Health Care Professions	43
Department of Medical Laboratories	44
Department of Nursing	46
School of Agricultural Technology	49
Department of Agricultural Machinery & Irrigation	50
Department of Animal Production	52
Department of Crop Production	54
School of Technological Applications	57
Department of Electrical Engineering	58
Department of Mechanical Engineering	60
Department of Civil Engineering & Infrastructure	62
Department of Informatics & Telecommunications Technology	64
Department of Exact Sciences	67
Karditsa – the city & prefecture	70
Karditsa Branch	73
Department of Forestry & Environmental Management	76
Department of Wood & Furniture Design & Technology	78
Department of Food Technology	80
Trikala – the city & prefecture	84
Trikala Branch	87
Department of Building Renovation & Restoration	88
Administrative Organisation Chart	90
Education & Research Committee	91
Quality Assurance Unit	92
Quick Reference Telephone Numbers	94
Larissa Campus Map	95



A Preface by the President



T.E.I of Larissa is the third largest Technological Educational Institution in Greece and comprises four Schools, two Branches in Karditsa and Trikala, and eighteen academic departments altogether.

Its strategic goal is to continuously improve the quality of the courses and the educational services offered as well as to promote knowledge through a variety of research programmes.

Our facilities include modern classrooms and fully-equipped laboratories, Halls of Residence, auditoriums, restaurant, a multi-sport gymnasium and a conference centre, as well as excellent electronic services. We provide

students with ample learning resources and access to unlimited sources of information and knowledge through the library and the database network.

Our institution delivers postgraduate courses in collaboration with Universities in Greece, the United Kingdom and Italy, while at the same time offers academic support to students through the Career Office (employment issues, etc.), the European Programmes Office (mobility, etc.) the Centre of Foreign Languages & Physical Education (language learning and sports activities), and the Institute of Life-long Learning (continuing education, etc.).

Our human resources, academic, administrative and technical, make every effort to insure the best practice in all academic activities. Our mission is to educate our students as responsible citizens in a democratic country and integrated Europe and as remarkable professionals in the labour market.

Larissa is easily accessed due to its geographical position and its public transportation network and offers pleasant living conditions to young people since it allows them to enjoy the benefits of a large city and the relaxed way of life in the country. The T.E.I. is an important part of this city and our students play a vivid role in its social and cultural life.

I wish you all good luck with your endeavours and I will be happy to welcome you to our institution.

T.E.I of Larissa President

*Dr Ioannis Kokkoras
Professor*

LARISSA - the city

Built successively on the very same place since antiquity, Larissa has always held a strategic role due to its geographic location in the middle of Thessaly, in the centre of Greece. Its role in the Greek economy, as well, has always been decisive. Larissa is a city blessed with wealth from the fertile land, with Peneios waters that give life to this land, and with its hard-working people striving for their city.

Larissa is the capital of the Prefecture and the Region of Thessaly, situated at about 350 km north of Athens and 154 km south of Thessalonica. Built in the centre of the Thessalian plain, on the banks of Peneios River, at just 70 m of altitude, it is the fourth largest city in Greece with a population of more than 200,000 people. It is one of the largest urban-commercial centres with a thriving political, economic and social life.

The city infrastructure includes the Technological Educational Institution, one faculty of the University of Thessaly, the Medical school and the department of Biochemistry & Biotechnology, the Regional University Hospital, and the famous Averof Agricultural School, which has trained Greeks in agriculture for almost a century and boasts an architectural gem of the early 20th century.

It is the centre of most public and military services in the area and deals successfully with all the rapid changes and the financial, social and political challenges that Greece faces within the European Union.

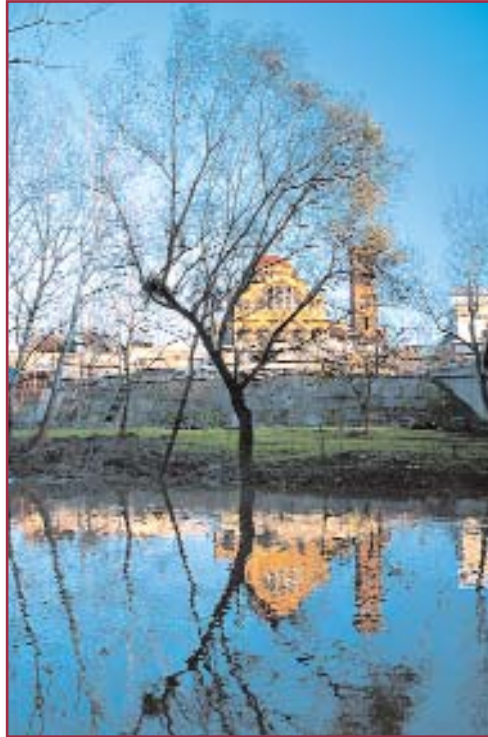


Past & Present

The history of the city starts six or seven thousand years ago when Pealsghi, our distant ancestors, cleared the fertile plain of Peneios in order to set up their first cultivations. They used to call these cleared up lands Argghi – Pelasghicon Argos was the first name of Thessaly. Near their fields they used to build their cyclopean acropolises which they called Larissa, coming from the word Laas, meaning rock, while the same root also produces the word Laos meaning nation. Larissa therefore is the rock-founded acropolis in the Thessalian plain that brought the people together. Later on, around 400 B.C. these people, this nation was organised into a union, one of the oldest in greek history, named the Common of the Thessalians, who voted for their representatives, called "tagous", which constituted the administrative bodies along with the assembly of the eminent citizens from all thessalian cities.

Peneios River, on the other hand, called "silvered-eddied" by Homer, signals the early entrance of the thessalian area to civilisation and actually led the Stone Age economy to new heights. Peneios was considered a descendant of gods in antiquity since it is the life-giving force in the thessalian plain and the most prominent geographical element of Thessaly while it undoubtedly dominates the face of Larissa.

Centuries passed over the city bringing violent changes very often, and they swept everything but the persistence of its people to gather together around its squares, its temples, its river and its theatres even ruined as they were. This is the impression the city gives to the travellers that visit the museums, walk about the archaeological sites, the Roman antiquities and the remains of the 6th century early Christian church that holds St Achilles' grave, and enjoy coffee in the Frouirion Hill with the 15th century covered agora called Bezesteni. Frouirion, meaning fortress, and the surrounding pedestrian areas offer visitors a glimpse of the remotest past of the city, as this very hill, called Larissa's Acropolis during the Classical era, has been inhabited continuously since the early Stone Age, i.e. since 6,000 B.C. according to archaeological research.



The city is surrounded by crossing national motorways and railways and provides transportation facilities with intercity and local coach lines. It leads a vivid life and relaxes in the dozen squares crammed with cafés and restaurants, under blooming lime-trees and plane trees, among flowerbeds and water-fountains. The central squares and the pedestrian precincts are beautifully decorated with sculptural pieces of art while crossed by the "emerged and submerged Peneios River".

The ideal place for a long stroll or bike ride away from the traffic is the landscaped river-bed with the pedestrian walkways, footbridges, bicycle paths and the surrounding grounds that offer cool summer afternoons. All Larissa citizens walk via

Alkazar, the large park by the river, on their way either to the annual Peneios Festival, or to the concerts and other cultural events held at Kipothetre, or to take a break from work and explore the thessalian cuisine at the local taverns. Opposite Alkazar stands a monument with the statue of Hippocrates, the father of medicine, who spent his last years in Larissa where he died in 377 B.C. In 1826 a flood revealed his grave at the exit of the city on the road to ancient Gyrtioni, and a monument was placed there.

The historical centre and the market place (agora in Greek) have been the heart and soul of the city for centuries. Every day producers used to bring their produce, agricultural



products, meat and milk products, in order to sell them to merchants and traders from all over Greece. Now-a-days there are also a lot of shops selling clothes, shoes, jewellery, books, etc, along with music stores, supermarkets, taverns, restaurants and traditional tsipouro-taverns. This close relationship between the city market and production activity from the plain has sustained, more than anything else, civilisation in the city through its course in history.

and visitors can observe the cavea, the orchestra and the spectacular scene as well as the rich sculptural decoration, which is still visible today. It was used for performances and other events till the second half of the 1st century B.C. During the Roman times it was used as an arena. The second Ancient Theatre was built around the second half of the 1st century B.C. and it the smaller of the two.



The large **Archaeological and Byzantine Museum**, up in Mezourlos Hill, houses the archaeological treasures of Thessaly –prehistoric, classical and Byzantine. The history of the thessalian capital can be viewed here in the prehistoric menhirs that symbolized goddesses, the marble tombstone with the sculptured soldier that died in the Tanagra battle back in 457 B.C. and many more remarkable exhibits.

Culture

Straight from the thessalian plain and all the activities developed in it, a unique culture came up and set in Larissa, combining memories from the past with the sense of beauty and art along with the culture of the countryside. The two Ancient Theatres witness remarkable cultural activity for at least 500 years, although the city was under various rulers. The first Ancient Theatre is situated in the south slope of Frouirion Hill looking towards the ancient market place, and it is the larger and more monumental of the two. According to calculations its capacity was over 10,000 people and it is dated at the end of 3rd century B.C. at the time when Philip the 5th was king of Macedonia. It is an important ancient monument

Folklore and History Museum is situated in the district of Haravghi and shelters the rich folkloric heritage of the area. Exhibits include relics, pieces of art, engraving collections, and objects of everyday life that reveal the traditional way but also the urban way of life in the area during the last two centuries, before and right after the industrial revolution.

Municipal Gallery of Larissa – “G. Katsigra Museum” was established in 1983 in order to shelter the 750 paintings that George Katsigras had donated to the city as well as 410 pieces of sculpture, paintings and engravings owned by the gallery itself. The new gallery building in Neapoli district was founded in 2003.



Music – Dance – Theatre – Sports

Since the 19th century music life in the city is dominated by the wind instruments Orchestra and, later on, the Philharmonic and the New Orchestra. In the beginning of the 20th century the Municipal Conservatoire of Larissa was founded and has set up remarkable orchestras, choirs and a philharmonic, so far. The Greek music scene is equally important since both traditional folk music and urban music are well appreciated in Larissa. Every year a lot of groups perform at Kipotheatre in Alkazar, at "Mill club 1927" and other music halls.

The Municipal Dance School, the Higher Ballet School and Thessalian Ballet have managed to bring the art of dance to blossom, a lifelong dream in Larissa.

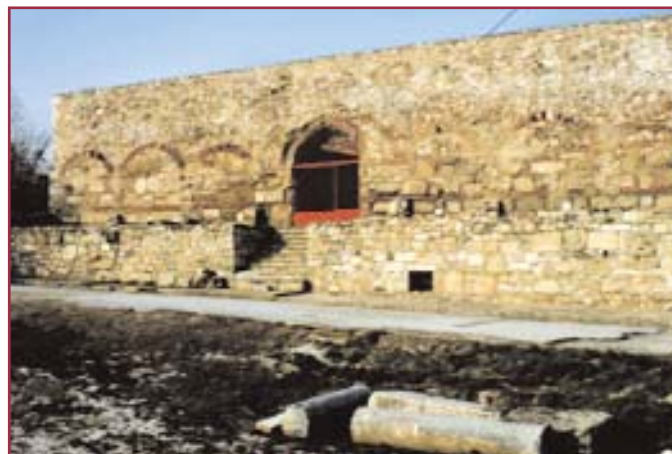
Besides the ancient theatrical tradition, Larissa presents a contemporary myth in modern theatre, the "Thessalian Theatre", a company founded in 1975 by artists originated from Larissa, such as Hatzidakis, Kampanellis, Aggelopoulos, etc. It was the first Municipal Regional Theatrical Company operating two scenes, and it has presented more than 60 plays, giving performances and touring every summer and winter and participating in

European festivals.

The "Priest's Mill" is an old restored flour-mill which has been converted to a cultural centre housing a great number of events and performances by the Thessalian Theatre, Puppet theatre, ballet School, etc.



There are more than thirty courts for football, basketball, volleyball and tennis in the city, and a lot of athletic seminars, events and workshops for trainers are held every year while the Municipality founded a Basketball Academy for young people in 1995.



Larissa Prefecture

Larissa Prefecture is a special place of unique beauty, history and traditions. It is the second largest prefecture in Greece and the largest one in cultivated land since it comprises most part of the thessalian plain. It is on the mainland, crossing the basic motorway axis that connects Athens and Thessalonica, the northern with the southern part of Greece, as well as EU countries with east-Mediterranean countries.

Half the prefecture land is flat, a high percentage of which is irrigated, and the main cultivations are cotton and cereal crops. One third of the population work in agriculture, a smaller percentage in industry and over 40% in services. The population is spread unevenly within the prefecture, as more than 40% of the people live in Larissa. During the last decade there has been a constant decrease in agriculture accompanied by an increase in industry and services, which play an important role in economy of the prefecture. Agricultural product processing holds a considerable position in industry, while wood processing is developing fast, along with textiles, clothes, food and paper production, and mechanical and machine processing. Retail is the prevailing activity in services while tourism is advancing rapidly in the area. Most trade is concentrated in the capital and agricultural products and textiles are the main exports.



Another distinct feature of the prefecture morphology is high mountain ranges, in the north, including the famous **Mount Olympus**, divided into the main mass and Lower Olympus, Ossa, Mavrovouni, Titaros and Antichasia. Mount Olympus is the highest (2,917 m) and one of the most beautiful mountains in Greece. It was believed to be the residence of the Twelve Gods and Goddesses in ancient greek history, and its slopes and peaks were home to ancient temples



(Zeus' temple) and monasteries (St Dionysus, Petra's, etc.). A section of the mountain was declared National Conservation Park in 1938 and UNESCO named it a Biosphere Reserve, aiming at protecting and documenting its rare flora and fauna species.

Nestled on its slopes one can find picturesque villages (such as Kokkinopilos, Karya, Kallipefki, Rapsani, Krania), five mountain refuges that cater for climbers and hikers and well-equipped ski-resorts at Vrysoules and Elassona.

Mount Ossa (or **Kissavos**) stands in the east, right next to Mount Olympus from which it is separated by Tempi Valley formed along Peneios river. The remarkably beautiful natural landscape, with the steep rocky slopes, is an ecological paradise for large numbers of birds, such as storks, kingfishers, horn-owls, etc. Mount Ossa is densely covered in forests of breech, chestnut, fir and oak trees, and features deep gulches, breathtaking cliffs and rivers that turn into impressive canyons and waterfalls. It is well-accessed by road, which makes it the ideal place for nature and adventure enthusiasts that can enjoy trekking on its well-marked paths, climbing on slope sites, mountain biking, canyoning, rafting, and canoeing-kayaking, and visit picturesque villages such as Ampelakia, Karitsa, Melivoia, Megalovryso, Anatoli, Spilia.

The region is scattered over with traditional villages such as **Ampelakia** with its famous old mansions that depict the architectural and cultural heritage of the area. In 1778 the first co-operative was set up in Ampelakia. It was the "Ampelakia Common Fellowship and Brotherhood" and its main activity was cloth-dying and cotton fabrics trade. **Palaiopyrgos** is located on the mouth of Peneios river which is an important ecological place for rare birds. **Tyrnavos**, with a long tradition in

viniculture, is considered the most important tsipouro-making village in the region and produces various wines, too. **Tsipouro** is a popular vine drink made through double distillation of grapes mixed with herbs and aniseed. However, the most famous vineyards producing red wine in the area are located at **Rapsani**, Pyrgetos and Krania villages. **Elassona**, on the other hand, is famous for its cheese and dairy products, while **Agia** area produces delicious apples, pears and cherries and **Karitsa** is well-known for its chestnut yield.

The coast line of the prefecture on the Aegean Sea stretches for several kilometres and features sandy and pebbly beaches such as Velika, Agiokampos, Rakopotamos, Stomio, where one can enjoy swimming and other sea sports in the summer.

Special thanks to Larissa Municipality and Prefecture for providing the information and photographs of the city and the region.

www.larissa-dimos.gr

www.larissa.gr

www.thessalia.gov.gr

www.tourism-larissa.gr



Technological Educational Institution of Larissa

Foundation & Mission

T.E.I. of Larissa was established as a tertiary education institution in 1983 (under Act 1404/83), along with all Greek TE.I.s which replaced the existent Higher Technical & Vocational Centres.

In 2001 (under Act 2916/2001) all Technological Educational Institutions were established as Higher Education institutions along with the universities, in compliance with the Bologna declaration. According to Act 3549/2007 Higher Education in Greece consists of two parallel sections:

- ◆ The university section comprising all Universities, Polytechnics and the Athens School of Fine Arts
- ◆ The technological section comprising all Technological Educational Institutions and the Higher School of Pedagogy & Technological Education

Mission of T.E.I.s, as well as all Higher Education institutions, is:

- ◆ to produce and transmit knowledge through research and education and to promote arts and culture.
- ◆ to contribute to the shaping of responsible citizens, capable

of dealing with all fields of human endeavour, based on their scientific, professional and cultural adequacy while having respect for justice, freedom, democracy and solidarity.

- ◆ to properly respond to meeting the social, cultural, educational and developmental needs of society with dedication to the principles of viable development and social cohesion.
- ◆ to provide the necessary environment for the development and dissemination of new knowledge and the promotion of new researchers, through cooperation with other research bodies in Greece and/or abroad, participating in the utilization of knowledge and human resources for the welfare of both the country and the world society.
- ◆ to contribute to the implementation of equality, equal rights and equal opportunities practices between the two sexes.

In order to accomplish their mission all Higher Education Institutions ought to assure and improve the quality of the services offered and disseminate all information regarding their activities to the community, ensuring the highest possible transparency.



Organisation & Structure

Technological Educational Institutions are self-administered Legal Entities under Public Law according to Greek Constitution Article 16, paragraph 5, while state supervision is exercised by the Minister of National Education and Religious Affairs. All governing bodies (President, Vice-presidents, Council, School Directors, Department Heads, etc) come from the T.E.I educational staff and are elected by the members of each academic community for tenure. The Assemblies in each institution vote on the Internal Studies Regulation which consists of the basic rules that govern the institution operation, body responsibilities, and studies at the Greek T.E.I.s.

The basic Academic Unit is the **Academic Department** which awards Degrees to the students upon successful completion of their studies.

T.E.I. administration is exercised by both one-person and collective bodies. The highest administrative body is the General Assembly, which is composed of all higher bodies in hierarchy from the department Heads and above, as well as student representatives.

School Directors, the T.E.I. President and Vice-presidents and a student representative compose the T.E.I. Council. The School Council consists of the Department Heads along with the School Director and a student representative.

The highest administrative body of the Department is the General Assembly which comprises all academic Faculty members and student representatives. The Department Council is made up of the Head and the heads that coordinate the various knowledge sectors, in which the department field of study is divided, and a student representative.

Student representatives participate and have the right to vote in all administrative bodies, as well as administrative bodies elections.

Human Resources

The T.E.I. human resources consist of the Academic Faculty, the administrative staff and the technical staff. The Academic Faculty, which carry out the main teaching and research work, fall in two categories, permanent and under contract. The permanent Academic Faculty comprises Lecturers, Assistant Professors, Associate Professors and Professors, as well as Specialised-Teaching Faculty members. Scientific Associates and Laboratory Associates are the two categories of teaching Faculty under contract which are recruited by the departments on the basis of academic needs for the implementation of the curriculum. The percentages of permanent Academic Faculty and Academic Faculty under contract are 30% and 70%, respectively, throughout the institution. In addition, department Laboratories are run by permanent Technical Staff members and Laboratory-Teaching Staff members.



TECHNOLOGICAL EDUCATIONAL INSTITUTION OF LARISSA

T.E.I. of Larissa, 411 10 Larissa, Greece
+30-2410-684200
www.teilar.gr

Karditsa Branch, T.E.I. of Larissa
Mavromihalis Street End, 43100 Karditsa, Greece
+30-24410-71752

Trikala Branch, T.E.I. of Larissa
1C Argonafton, 42100 Trikala, POBox 34826, Greece
+30-24310-23602

Location & Facilities

T.E.I. of Larissa is located and operates in three major cities, which are capitals in the respective prefectures, in Thessaly: Larissa, Karditsa and Trikala.

Larissa campus is situated approximately 4km west of the city centre, on the national motorway from Larissa to Trikala.

The institution facilities and fields spread out over an area of 400 acres (120 ha), 1/4 of which are taken up by the following buildings:

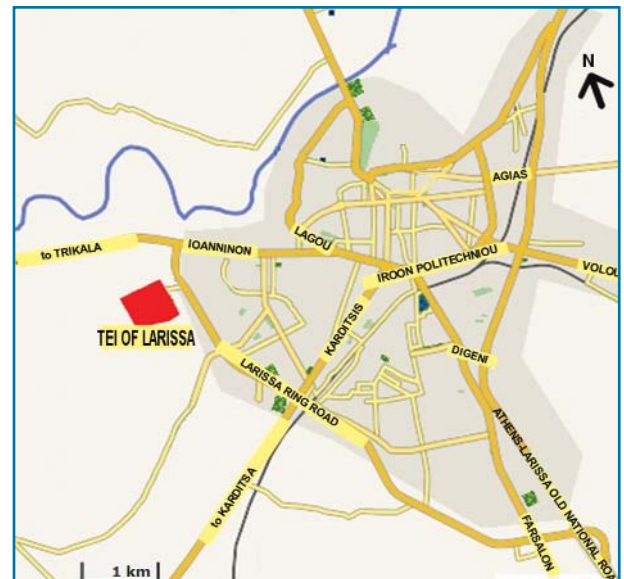
- ◆ The main building block which houses administration offices and the Schools of Technological Applications, Health Care Professions, Agricultural Technology and Business & Economics. Facilities include classrooms, laboratories, Faculty offices, an auditorium and the library.
- ◆ Detached buildings that house the departments of Mechanical and Electrical Engineering, the department of Tourism Enterprises and the department of Animal

Production, with classrooms, laboratories and Faculty offices.

- ◆ A multi-purpose building block with a well-equipped conference centre and the student restaurant which has a catering capacity of 3,500 people.
- ◆ Halls of Residence Complex for student accommodation.
- ◆ Sports facilities that include football, basketball, volleyball, tennis courts, etc. and a well-equipped multi-sport gymnasium including a basketball court and fitness centre.
- ◆ The farm which comprises gardens and animal breeding installations for the laboratory practices of the Agricultural Technology School.
- ◆ The new Central Library building of 2,778 m² in area which has just been completed in order to meet the educational needs of T.E.I.
- ◆ Building A, of 4,500 m² in area, which has just been completed and will house the departments of Project Management and Informatics & Telecommunications Technology.



How to get to Larissa campus: Take the city BUS 9 or BUS 12 from the city centre.

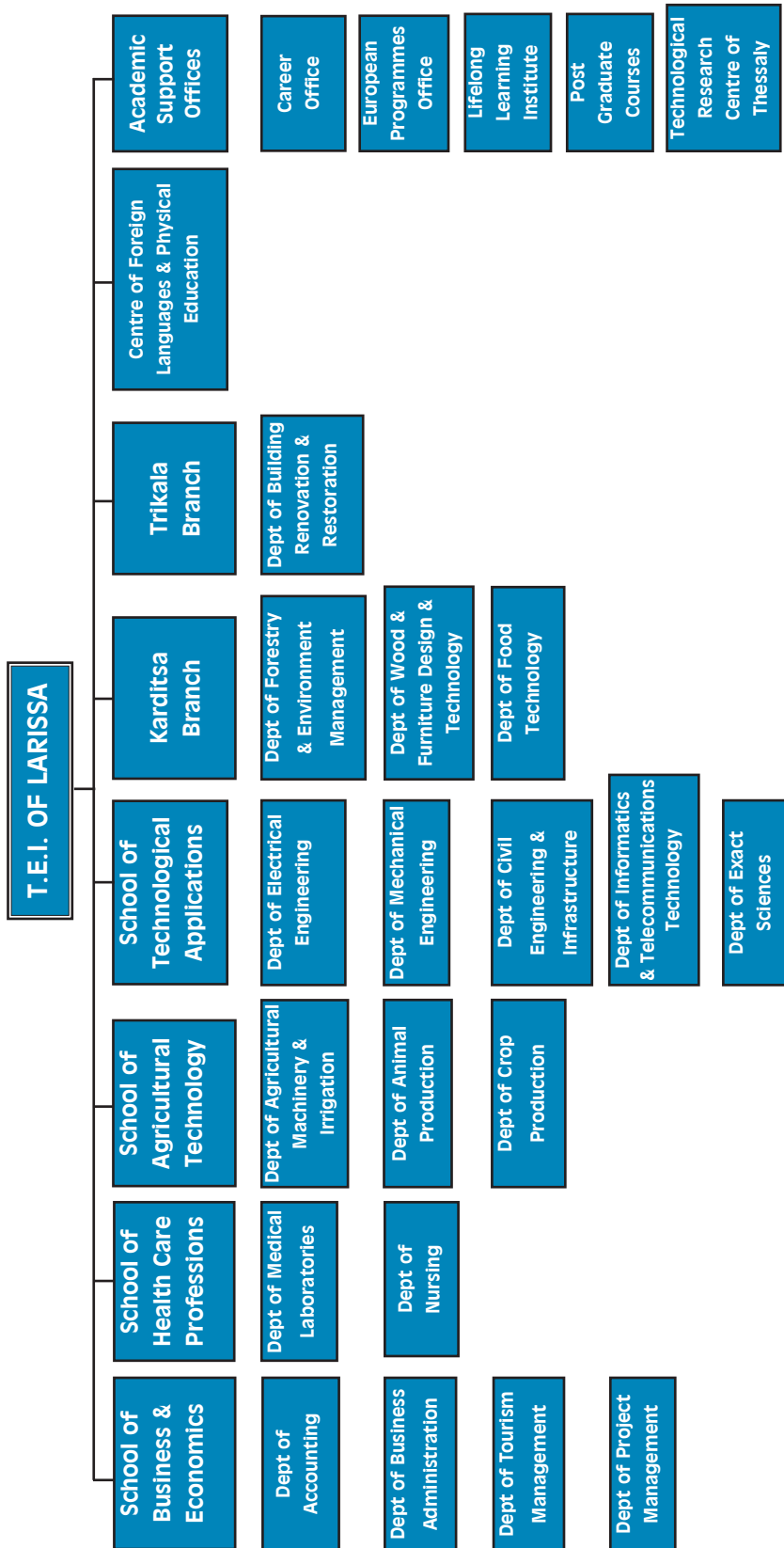


Karditsa Branch is located at its own campus with ample buildings and facilities such as student restaurant, library and Halls of Residence. Karditsa Municipality has recently donated a building block, of 2,770 m² in area, fully renovated for the housing of the department of Food Technology. In addition, a new building for the department of Wood & Furniture Design & Technology was founded in June 2007.

Trikala Branch is located at Bara precinct, approximately 700km north of the city centre, on the national motorway to Ioannina. Facilities include a newly renovated three-storey building block of 3,300 m² which is placed in the middle of a large yard. The building comprises classrooms, laboratories, offices and the Trikala Branch Library.



Academic Organisation Chart



Studies

Admission to **studies** in Higher Education in Greece is free.

The language of instruction in undergraduate courses is Greek. However, T.E.I. of Larissa plans and delivers course in English at undergraduate and postgraduate level.

Entry Requirements

Students admitted to T.E.I. undergraduate courses (according to the educational system) are expected to:

- ◆ hold a General Secondary School-leaving Certificate and have successfully taken the national examinations organized by the Ministry of National Education and Religious Affairs.
- ◆ hold a Vocational Secondary School-Leaving Certificate and have successfully taken the national examinations organized by the Ministry of National Education and Religious Affairs.
- ◆ hold a University or T.E.I. degree and have successfully taken special examinations organized by the T.E.I., or have been selected on the basis of their academic qualifications.

Academic Year

The academic year starts on 1 September of each year and ends on August 31 of the following year. The teaching year starts on 1 September of each year and ends on July 5 of the following year, and is structured chronologically in two semesters, the winter and spring semester. Each semester consists of at least 15 weeks of classes and is followed by two exam periods, each of which lasts two weeks. The second exam period of the spring semester takes place in the first two weeks in September of the following academic year.



Course structure

Studies last eight (8) semesters. During the first seven (7) semesters students attend theory sessions, take part in laboratory exercises and practical workshops, participate in scientific conferences and seminars and carry out assignments and projects, individually or in groups. During the last semester they take up a six-calendar-month **work placement** at industries, enterprises, companies, offices etc, in both the private and public sector, in order to put into practice the knowledge they have acquired. They also draw up their **degree dissertation**.

Each T.E.I. department structures the programme of studies on the basis of student work load and the ECTS (European Credit Transfer System) credits assigned to each course unit. Each course comprises general background course units (GBC), specific background (SBC) units, speciality units (SC) and course units from the field of management, economics, law and arts (humanities) (MELA).

Students' work is assessed on the basis of their performance in theory sessions, laboratory exercises, workshops, assignments and projects throughout the semester, as well as their results in the written examination taken at the end of the semester.



Degree

According to Internal Studies Regulation, students become graduates when they have:

- ◆ successfully attended all course units and have accumulated at least 240 ECTS credits,
- ◆ had their degree dissertation approved and marked, and
- ◆ completed the six-month work placement.

Degrees are accompanied by the **Diploma Supplement** which is issued by the department, as well. It contains sufficient information regarding the academic and professional recognition of the degree, such as type, level, background, content and status of the studies completed. It also presents detailed information on the work placement, degree dissertation and mobility of the degree holder.



Student Welfare

Teaching Material

T.E.I. students are entitled to free textbooks and teaching notes.

Accommodation

Free accommodation is provided at the Halls of Residents to a number of students that have low income. The eight Halls of Residence belong to the TEI and can provide accommodation to 606 students in twin-bedded rooms, including rooms with special facilities for students with disabilities. In the same complex there are also TV rooms, rooms for indoor games, coffee shop and laundry facilities.

Student Restaurant

Free meals (breakfast, lunch and dinner) are provided at the Student Restaurant to students that have low income. Student Restaurant is located on the ground floor at the Conference Centre.

Health Care

Students are entitled to free medical and health care under the Greek National Health system, unless otherwise insured, for as long as they study at the T.E.I., up to twelve semesters.

Reduced Fare Card

Upon registration students are issued a Reduced Fare Card which entitles them to reduced ticket fares in all means of public transportation. The Reduced Fare Card is renewed very year by the School secretary.

Student Grants

Student grants (€ 1000) are available to students who are not

entitled to free accommodation, in order to cover their living expenses, on provision they respond successfully to their academic obligations.

Scholarships

All students are eligible for scholarships which are granted by the Greek State Scholarship Foundation, on the basis of their academic performance.



Student Welfare

+30-2410-684431, +30-2410-684407, +30-2410-684393, +30-2410-684430 (fax)
accommodation@teilar.gr

Student Restaurant

+30-2410-684403, +30-2410-684402

Health Care

+30-2410-684261

T.E.I. of Larissa, 411 10 Larissa, Greece

Library

The **Library** was founded in 1973 and its resources meet the educational and research needs of all users-members within the T.E.I. community. It comprises the Central Library of about 850 m² in area and the Multiple-copies Library, both situated at the central building block in Larissa campus, and the Libraries at Karditsa and Trikala Branches. Central Library is staffed by eight librarians while two are employed at Karditsa and one at Trikala libraries. A new modern building of 2,778 m² in area has been built to accommodate the T.E.I. educational needs, and will be open shortly.

Library facilities and areas accessible to all library members include:

- ◆ Bookcase room with collections of books and other printed material.
- ◆ Reading room with quiet study places.
- ◆ Laboratory fully equipped with computing and audio-visual facilities that provide access to electronic and audio-visual educational material.
- ◆ Laboratory specially designed for people with disabilities.
- ◆ Computer Work Stations for students to search for available books via the Online Public Access Catalogue (OPAC).
- ◆ Journals Display and Reading room, with a large collection of issues both in Greek and other languages.

Library Resources

All Central Library items are fully accessed and fall into two categories:

- ◆ **Printed** material, both in Greek and other languages, which includes:

- ✓ Monographs & Journals
- ✓ Textbooks & Dictionaries
- ✓ Conference Proceedings
- ✓ Degree Dissertations
- ✓ PhD Theses

◆ **Audio-visual** material such as:

- ✓ DVDs & CDs
- ✓ Video & sound recordings & Slides
- ✓ Electronic resources
- ✓ Computer Software (accompanying printed publications)

◆ **Electronic material**

The library participate in Heal-Link – the Hellenic Academic Library Network and provides all members with electronic access to abstracts and articles from scientific periodicals printed by well-known publishers such as Elsevier Science, IEEE, Emerald, Springer, Kluwer & MCB, etc.

Services

Each library member is entitled to the following services:

- ◆ Book loans for up to fifteen (15) days
- ◆ Interlibrary loans of books from many other HE institutions, through participation in the National Cooperation Network of Scientific and Technological Libraries and the National Documentation Centre.
- ◆ Long-term loans (up to one academic semester)
- ◆ Personal assistance by the library staff, upon request.



Registration

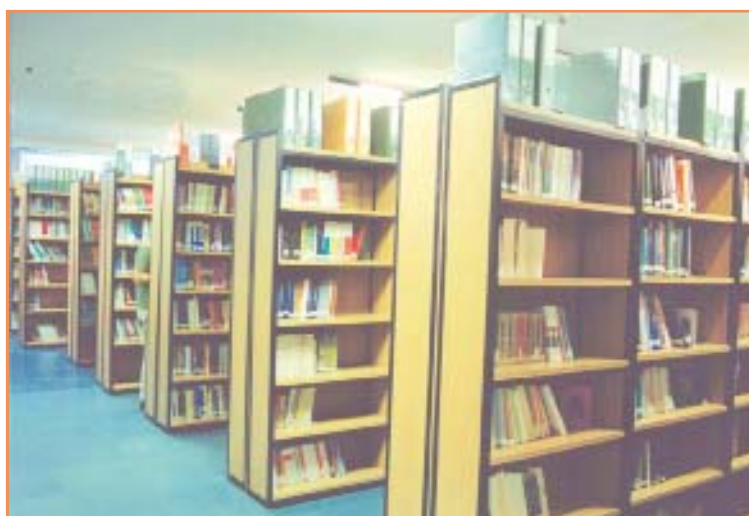
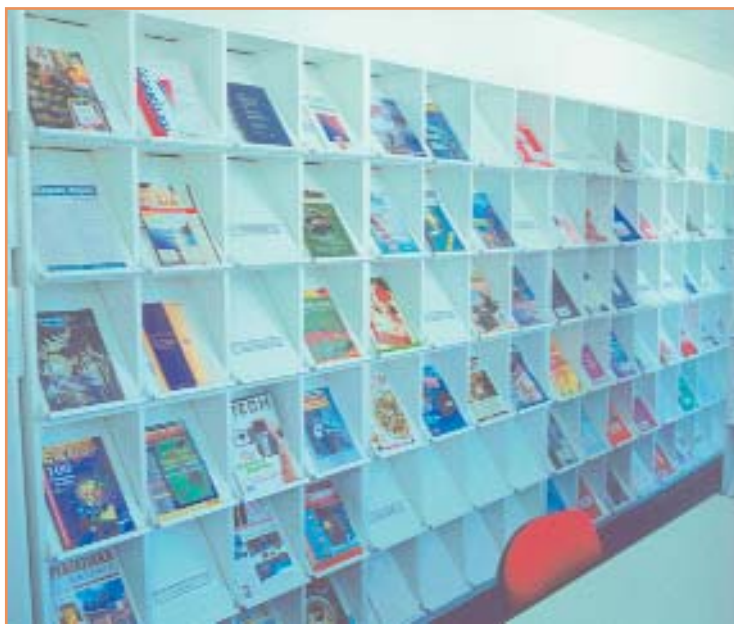
Membership registration is carried out at the library through a simple procedure by:

- ✓ filling in an application form (provided by the library), and
- ✓ presenting a valid student ID card.

Opening Hours

The library is open on Monday to Friday at 8.00 - 18.00.

The Library participates in Operational Programmes for Education & Initial Training I & II and is financed by the European Social Fund within the 2nd and 3rd Community Support Framework through the Ministry of National Education and Religious Affairs.



Central Library

+30-2410-684380, +30-2410-684462

library@teilar.gr

Multiple-copies Library

+30-2410-684377

T.E.I. of Larissa, 411 10 Larissa, Greece

<http://library.teilar.gr>

Career Office



Career Office at T.E.I. of Larissa:

- ◆ Aims to properly advise and assist T.E.I. students and graduates in planning their future career path.
- ◆ Develops close contact with enterprises and organizations not only in the region but throughout the country and informs them of the institution and the graduates for recruitment purposes.
- ◆ Records the needs in the economy through employment opportunities offered by companies and demand for employment by T.E.I. graduates.
- ◆ Provides counselling to students and graduates regarding their professional skills and employability issues.
- ◆ Works closely with professional and social agents in Thessaly region.
- ◆ Organises career events.

Services

Career Office provides students and graduates with the following services:

- ◆ Career Counselling with workshops offered throughout the year, covering topics such as CVs, covering letters, completing application forms and interview skills.
- ◆ Information on pursuing further studies, such as postgraduate courses and seminars.

- ◆ Information on professional accreditation and professional bodies.

Employment Service

Career Office has created a Data Base with T.E.I. graduates' CVs which are forwarded to companies that need to recruit personnel for their vacant positions. Graduates who wish to be included in the data base have to:

- a) fill in an application form (provided by the office), and
- b) send and register their Curriculum Vitae electronically in the data base.

Online Services

The Career Office web site is updated every day and gives students access to:

- ✓ Career announcements
- ✓ The Career Office Newsletter, which informs registered members every day on:
 - ◆ vacancies,
 - ◆ postgraduate courses
 - ◆ vocational training programmes
 - ◆ events
- ✓ The Career Office Forum, where students and graduates register in order to discuss career issues.



Events

Career Office successfully holds and actively participates in events, conferences and workshops, such as:

- ◆ Career Days with employer and graduate presentations and interviews.
- ◆ One-day Presentations of postgraduate courses in Greece and abroad.
- ◆ Exhibitions and Promotions regarding the Career Office activities.
- ◆ One-day Events for T.E.I. of Larissa graduates on Career Opportunities and Accreditation issues.
- ◆ Orientation Events for secondary school pupils.
- ◆ Welcome Events for new students and Graduation ceremonies.



Entrepreneurship Support Unit

It is a programme run by Career Office that aims at providing motivation, ideas and mainly confidence to HE students and graduates in order to develop their entrepreneurial initiative and set up new enterprises or take up entrepreneurial activities in existing companies.



The programme provides the following services on a daily basis:

- ◆ Information on financing, sectors of entrepreneurial action, other related services, networking and training.
- ◆ Support in developing an entrepreneurial plan
- ◆ Support in developing a Marketing plan
- ◆ Counselling and motivation sessions
- ◆ Information material
- ◆ Networking
- ◆ Enhancement of entrepreneurial concepts

Career Office is staffed with three career counsellors and an entrepreneurship counsellor.

A Career Office was established at Karditsa Branch in 2005.

The Career Office participates in Operational Programmes for Education & Initial Training I & II and is financed by the European Social Fund within the 2nd and 3rd Community Support Framework through the Ministry of National Education and Religious Affairs.



Contact Details

+30-2410-684418, +30-2410-618098, +30-2410-611995 (fax)

T.E.I. of Larissa, 411 10 Larissa, Greece

career@teilar.gr

<http://www.career.teilar.gr>

Career Office - Scientific Project Manager

+30-2410-684547

tzach@teilar.gr

Entrepreneurship Programme - Scientific Project Manager

+30-2410-684433

wogiatzi@teilar.gr

European Programmes Office

It was established in 1995 and aims at implementing European educational programmes.

T.E.I. of Larissa has been participating in SOCRATES, the EU-funded programme, since 1996. Upon completion of the second phase that lasted from 1 January 2000 till 31 December 2006, the institution has been awarded the **Erasmus University Charter** approving participation in the third phase which is now called LIFE-LONG LEARNING PROGRAMME and will last from 1 January till 31 December 2013.

ERASMUS, the mobility programme for Higher Education students, staff and institutions, and ECTS are the two main actions T.E.I. of Larissa is implementing. ERASMUS offers students that have successfully completed their first year of studies, an opportunity to undertake part of their studies (three up to twelve months) at a partner institution in another European country. The study abroad may involve class attendance, work placement or writing the dissertation and it is recognized by T.E.I. of Larissa on the basis of bilateral academic agreements. The EU provides eligible ERASMUS students with mobility grants through the Greek State Scholarship Foundation (IKY) which is the national agent.



Student mobility within the European Union is facilitated by the implementation of ECTS (European Credit Transfer System) which regulates the procedures through which the study period abroad is fully accredited by the home institution.

Under the ERASMUS programme academic staff can participate in short or long term teaching mobility at a partner institution. Also, common Intensive Programmes (IP) are developed with the participation of a number of partner institutions.

Studying abroad under Erasmus Programme can give students a chance to experience life in another culture and studying under a different Higher Education system. It can enhance their employability and add an international dimension to their CV as graduates.

Participating in the programme will give students an opportunity to practice English, to improve their knowledge of another country and another language and make friends from all over Europe.

Student and staff mobility aims at enhancing the European dimension of Higher Education.

T.E.I. of Larissa has established cooperation and signed bilateral agreements with partner institutions in France, Germany, Finland, Czech Republic, Holland, Portugal, Italy, Cyprus, Poland, Denmark, Hungary, Spain and Lithuania.



Contact Details

+30-2410-684281, +30-2410-611268 (fax)

oep@teilar.gr

T.E.I. of Larissa, 411 10 Larissa, Greece

www.teilar.gr

Centre of Foreign Languages and Physical Education

The Centre is an independent academic unit which does not award degrees or certificates and operates under the direct supervision of T.E.I. Council. It aims at providing students with the necessary theoretical knowledge and practical skills in foreign languages that will enhance their professional skills and employability.

Mission of the Centre is to organize and support:

- ◆ foreign language classes: English, French, German and Italian,
 - ◆ Language for Specific Purposes (LSP) classes or Terminology classes,
 - ◆ Greek, as a foreign language, classes for foreigners who study at the T.E.I. under European Programmes, such as Socrates-ERASMUS,
 - ◆ Physical Education activities,
- in all the academic departments and branches at T.E.I. of Larissa.



Foreign Language Classes

Students have the opportunity to study one of several different languages – English, French, German and Italian – which are taught at the institution depending on the language needs of their department. Language classes start from scratch and follow levels A1, A2, and B1 according to the Common European Framework of Reference for Languages (CEFR). Language classes allow students to improve their

language skills in order to be able to attend the Language for Specific Purposes (LSP) classes or Terminology classes in their field of study, which fall into levels B2 and C1 (Common European Framework of Reference for Languages). Languages for Specific Purposes or Terminology are compulsory course units in the departments' programme of study. They provide students with the necessary language tools that will allow them to respond to research bibliography in any field of study, and will enable them to find employment in a wide labour market and a multicultural social environment.

Foreign Language Multi-media Lab

The Centre facilities to support language learning include a Foreign Language Multi-media Lab, where English and French language study is computer and internet-based. The Lab was founded in February 1997 aiming at enhancing Terminology teaching with the use of special IT applications. Specialised CD-ROM material was used in the beginning but now-a-days updated methodology with WebPages and internet tools and WE Portals allow student to link and access English teaching material in their field of study. New language learning and teaching needs that have come up over the years have been met by new IT technologies such as MS SQL Server, ASP and JSP WebPages, Microsoft Access and Windows 2000 Domain. Students' performance is assessed electronically and their marks are kept in a data base for their final assessment.

The Multi-media Lab is used for the support of English language teaching of the departments of Tourism Enterprises and Medical Laboratories.

In addition there is an audio-visual language learning lab that offers students the opportunity to practice listening and speaking.

Physical Education

Students are offered the chance to take part in various athletic and leisure activities and events that the Centre organizes and holds at the T.E.I. sports facilities. These include:

- ◆ Coaching and matches of team sports such as football, basketball, volleyball, as well as tennis, etc.
- ◆ Internal matches against other institutions
- ◆ Fitness coaching for students and T.E.I. staff.

The centre also participates in national sports events such as Hellenic Student Games, and organizes chess games at local and national level.

The centre of Foreign Languages and Physical Education is located in the main building. Human resources include thirteen (13) permanent Lecturers, an administrator at the secretariat, and approximately twelve (12) Special Course and Laboratory Associates.



Contact Details

+30-2410-684443

secry-flang@teilar.gr

T.E.I. of Larissa, 411 10 Larissa, Greece

www.teilar.gr

Data Network Services

T.E.I. communications (voice-data) **Network** offers fundamental support to all academic and administrative activities by conveying information electronically. It is linked to Greek Research and Technology Network under the provision of GUNet (Greek universities Network). Its infrastructure includes structured and wireless connections.

Internet access at very high speed (1 Gb), telematics including Internet services, as well as advanced IT services are offered to all members of the T.E.I. community (students, academic Faculty, researchers, technicians, administrative staff, etc.) and allow them to use all available learning resources at the institution premises or from a distance.

Services

- ◆ Standard Internet services such e-mail, WEB, FTP, electronic mailing lists, etc.
- ◆ Advanced asynchronous tele-education services which are provided through portals that have been established, such as e-class at: <http://e-class.teilar.gr> and Elektra at: <http://elektra.teilar.gr>
- ◆ Advanced synchronous tele-education services are provided at the fully-equipped Tele-education and Tele-conferencing studio which can be used by the academic Faculty to deliver and transmit classes in the internet in real time. The studio can be used for the recording and transmission of classes on demand, as well.
- ◆ Advanced administration services. Up-dated software has been set up at the institution secretariats, which allows students to receive documents such as application forms and grades, electronically from a distance at: <http://dionysos.teilar.gr>. At the same time the portal

<http://docman.teilar.gr> has been delivering documents to academic, technical and administrative personnel within the institution electronically, a service which has already brought about considerable reduction in bureaucracy.

The design, development and support of all telematics services belong in the scope of Information Technology department, which is an administrative unit in T.E.I of Larissa. The department runs the Network Administration Centre. It is also responsible for the automation of the institution, a fundamental project of which is the Computer Service Support Office that helps students to get familiar with new computer technologies and services.

Contact Details

+30-2410-684378, +30-2410-624200

noc@teilar.gr

T.E.I. of Larissa, 411 10 Larissa, Greece

www.teilar.gr

Lifelong Learning Institute

Lifelong Learning Institute (LLI) is an autonomous non-profitable educational unit in T.E.I. of Larissa that offers educational services to Higher Education graduates. The Institute is run by one-person and collective governing bodies, supervised by the T.E.I. and financially managed by the T.E.I. Education and Research Committee.

Educational / scientific Fields

LLI focuses on the following educational / scientific fields:

- ◆ Pedagogical Studies & Research
- ◆ Engineering Disciplines, electrical, mechanical & structural.
- ◆ Geotechnical Sciences
- ◆ Management and Economics Disciplines
- ◆ Health Care Sciences
- ◆ Information Technology
- ◆ Exact Sciences

Programmes

Studies that lead to a Continuing Education Certificate last up to four (4) months and total up to 75 hours of instruction. Studies that lead to a Lifelong Learning Certificate last up to twelve (12) months and total up to 250 hours of instruction.

The educational programmes will be implemented by permanent academic faculty members from Universities and Technological Educational Institutions, as well as T.E.I. of Larissa Scientific and Laboratory Associates.

Admission

All holders of a Higher Education degree in a related field fulfill the admission requirement for attending the programmes. The Ministry of National Education and Religious Affairs sets

the admission criteria.

Performance Assessment

Performance in each Subject Unit is assessed as a combination of a written final exam and a practical assignment for each part of the Subject Unit (theory and workshop) separately, in varied percentages depending on the nature of each Subject Unit. In case of failure, a new exam or practical assignment is given.

Certificates

Certificates of attendance are granted when the programme has been successfully completed and the certification criteria and procedures have been met.

Contact Details

+30-2410-684215

ll-learning@teilar.gr

T.E.I. of Larissa, 411 10 Larissa, Greece

www.teilar.gr

Post-Graduate Courses

According to Greek legislation in force, **postgraduate courses** can be delivered by:

- ◆ Universities
- ◆ jointly by Technological Educational Institutions and Universities
- ◆ jointly by Technological Educational Institutions and European Universities.

T.E.I of Larissa offers a range of **postgraduate courses** that lead to Master's Degrees, in collaboration with Staffordshire University and Coventry University in Great Britain. They are approved by the Ministry of Education & Religious Affairs and aim at HE graduates of related departments mainly (but not exclusively) in Greece or abroad.

The postgraduate degrees are awarded by the partner British Universities and are fully accredited by educational bodies in Greece. The language of instruction and exams is English.

SCHOOL of BUSINESS & ECONOMICS

Collaboration between the department of Project Management and Staffordshire University:

- ◆ **Master of Science in Management**
Full-time course lasting 12 months (2 academic semesters of instruction & 1 academic semester for dissertation preparation).
- ◆ **Master of Business Administration**
Part-time course, addressing graduates and/or executives with at least two years of work experience and lasting 24 months (4 semesters of instruction and two semesters for dissertation preparation).

Collaboration between the department of Business Administration and Coventry University:

- ◆ **Master of Science in International Business**
Full-time course lasting 12 months (1 academic semester at T.E.I of Larissa, 1 academic semester at Coventry University and 1 academic semester for dissertation preparation).

Collaboration between the department of Accounting and Coventry University:

- ◆ **Master of Science in Finance**
Full-time course lasting 12 months (1 academic semester at

T.E.I of Larissa, 1 academic semester at Coventry University and 1 academic semester for dissertation preparation).

SCHOOL of TECHNOLOGICAL APPLICATIONS

Collaboration between the department of Informatics & Telecommunications Technology and Staffordshire University:

- ◆ **Master of Science in Computer Science**
Full-time course lasting 12 months (2 academic semesters of instruction & 1 academic semester for dissertation preparation).



SCHOOL of HEALTH CARE PROFESSIONS

The department of Nursing at T.E.I. of Larissa and the department of Medicine at University of Thessaly jointly organise and deliver a Postgraduate Course on "**Primary Health Care**" which aims at graduates of Health Care disciplines from Greek or foreign HE institutions. It is a full-time course and the language of instruction and exams is Greek.

SCHOOL of AGRICULTURAL TECHNOLOGY

The departments of Animal Production and Agricultural Machinery & Irrigation jointly organise a postgraduate Master course on "**Production of quality animal and plant products in Mediterranean environment**" (Produzioni Zootecniche e Vegetali di qualita' in Ambiente Mediterraneo) in collaboration with the Agricultural School of Bari University in Italy. It addresses graduates from Agriculture, Biology, Forestry, and Veterinary and Natural disciplines that received their degree either in Greece or in Italy. The degree is awarded by the University of Bari, and it is fully approved by national agents. It is a full-time course that lasts 3 semesters. Instruction takes place in both Larissa and Bari. The language of instruction and exams is Italian.

The departments of Agricultural Machinery & Irrigation and Forestry & Environmental Management from T.E.I. of Larissa along with the department of Agriculture, Plant Production &

Aquatic Environment from University of Thessaly, and the department of Aquaculture & Fisheries from T.E.I. of Messolonghi jointly organise a postgraduate course leading to a degree in "**Sustainable Management of Aquatic Environment**".

T.E.I. of Larissa collaborates with the University of Perugia in Italy and delivers joint postgraduate Doctorate programmes. Graduates of any discipline are welcome to apply for the course. The research and experimental part can be carried out in either country under the supervision of a Greek professor. Doctorate theses can be written in Greek or in Italian. The duration is three years.



Contact Details

+30-2410-684501

postgraduate@teilar.gr

T.E.I. of Larissa, 411 10 Larissa, Greece

www.teilar.gr

Technological Research Centre of Thessaly



The T.R.C. of Thessaly is a Legal Entity under Private Law. It is based in Larissa and it is unbreakably connected with the Technological Educational Institution of Larissa, as the majority of its members are T.E.I. Professors.

Its mission is to help decisively in the uniform growth of the region and to contribute to the smoothness of inequalities in terms of growth and standard of living between the various regions.

It comprises five **Technology Transfer & Research Sectors**, which operate in the four prefectures of Thessaly:

1. Attributes Enhancement & Qualitative Control of Materials
2. Agricultural Technology
3. Biotechnology
4. Information Technology
5. Environmental Protection

The main objectives of T.R.C. are:

- ◆ To conduct Technological Research.
- ◆ To apply scientific and technological findings for the resolution of particular problems of the production process that will result in the social and economic growth of the Thessalian region.
- ◆ To improve production methods and processes, through which the needs of the region of Thessaly are served, and consequently the country needs.
- ◆ To develop applications and products.
- ◆ To provide scientific and consulting services.
- ◆ To support industrial-manufacturing plants.

For the achievement of its objectives, T.R.C. of Thessaly:

- ◆ Maintains a bidirectional relation with the local productive units and the local organised branches.

- ◆ Collaborates with T.E.I. of Larissa and promotes the development of relations with other Institutions
- ◆ Carries out studies and executes specific technological programs at the order of third parties or in collaboration with third or other programs that come under its objectives.
- ◆ Takes care of the organisation and financing of research and technological programs in Greece and abroad as well as publications, editions, seminars and conferences.
- ◆ Produces technological products and provides services relevant to the researching-technological concerns.
- ◆ Develops any other activity related to its objectives.
- ◆ Promotes the transfer of advanced technology and know-how.

Growth Potentials

- ◆ It occupies an important research-scientific workforce, faculty members of T.E.I. of Larissa and collaborating top-ranking scientists.
- ◆ In the forthcoming years, it expects to play a significant role in the production of technological research, quality and competitiveness within the local economy as well as in the wider Thessalian region.
- ◆ It will offer specialization to students and graduates, in modern sectors and new technologies.
- ◆ It is the only research centre that, with its branches in the four prefectures, will be expanding geographically in the entire Thessaly.

Contact Details

+30-2410-684500, +30-2410-684452 (fax)

info@trc-thessaly.gr

T.E.I. of Larissa, 411 10 Larissa, Greece

www.trc-thessaly.gr

School of Business & Economics

The School of Business & Economics consists of four academic departments:

- ◇ **Department of Accounting**
- ◇ **Department of Business Administration**
- ◇ **Department of Tourism Enterprises**
- ◇ **Department of Project Management**



Department of Accounting

The department has operated since 1983 and employs twelve (12) permanent members of Faculty, three (3) administrators at the secretariat, one (1) technician, and about forty-eight (48) Scientific and Laboratory Associates.

The department delivers a postgraduate course leading to an MSc in Finance in collaboration with Coventry University, in the United Kingdom.

- ◆ Apply cost accounting principles and methods.
- ◆ Carry out financial analyses and provide financial counseling.
- ◆ Apply internal and external control procedures.
- ◆ Carry out analytical cost evaluation and draw conclusions regarding market survey and promotion of products and services.
- ◆ Are trained users of up-to-date computerised accounting applications.

Field of Study

Studies cover the discipline of Accounting, as well as its applications in the private and public sector.

Career Opportunities

Graduate Accountants have acquired the necessary scientific and technological knowledge and skills in order to actively pursue employment in their field of study, either as executives in accounting enterprises and organizations, and private or public services, or as freelancers. In particular, they:

- ◆ Keep company accounting books according to the taxation legislation in force.
- ◆ Draw up and analyse balance sheets and financial lists.
- ◆ Prepares budgets for organizations and enterprises.



Contact Details

+30-2410-684379, +30-2410-684270

secry-account@teilar.gr

T.E.I. of Larissa, 411 10 Larissa, Greece

<http://accounting.sdo.teilar.gr>

1st Semester				
Code	Course Unit	Type	Hours /week	ECTS
151	Financial Accounting I	C	6	7
152	Mathematics for Business	C	4	5
153	Business Organisation & Management	C	4	5
154	Computer Applications in Business	C	4	2
155	Civil Law	C	4	5
156	Financial Theory	C	4	6
Total			26	30

2nd Semester				
Code	Course Unit	Type	Hours /week	ECTS
251	Financial Accounting II	C	6	6
252	Statistics for Business	C	4	5
253	Economics for Business	C	4	5
254	Introduction to IT	C	4	5
255	Business Law	C	4	5
256	Financial Policy	C	3	4
Total			25	30

3rd Semester				
Code	Course Unit	Type	Hours /week	ECTS
351	Accounting for Business	C	6	7
352	Taxation Accounting I	C	4	6
353	Computerized Accounting I	C	4	2
354	Business Finance	C	4	5
355	Computer Applications I	C	4	5
356	International Trade	C	4	5
Total			26	30

4th Semester				
Code	Course Unit	Type	Hours /week	ECTS
451	Cost Accounting I	C	6	6
452	Taxation Accounting II	C	4	5
453	Accounting Applications I	C	4	2
454	English Terminology I	C	4	5
465	Greek General Accounting Plan	E/C	4	6
475	Money and Financial Markets			
466	Marketing	E/C	4	6
476	Business Plan			
Total			26	30

5th Semester				
Code	Course Unit	Type	Hours /week	ECTS
551	Cost Accounting II	C	4	5
552	Accounting Applications II	C	4	2
553	Financial Statements Analysis	C	4	6
554	English Terminology II	C	4	5
565	Sector Accounting	E/C	4	6
575	Stock Market Investments			
566	Production Management	E/C	4	6
576	The Greek Economy			
Total			24	30

6th Semester				
Code	Course Unit	Type	Hours /week	ECTS
651	Computerized Accounting II	C	6	4
652	Labour Law	C	3	5
653	Economical - Technical Studies	C	5	7
665	Financial Reporting (Lists)	E/C	5	7
675	Management Accounting			
666	Human Resource Management	E/C	5	7
676	Operational Research			
Total			24	30

7th Semester				
Code	Course Unit	Type	Hours /week	ECTS
751	Auditing	C	5	7
752	Taxation Accounting II	C	4	6
753	Graduate Seminar	C	4	7
765	Computerized Accounting III	E/C	4	5
775	Computer Applications II			
766	Total Quality Management	E/C	3	5
776	EU & International Financial Organizations			
Total			20	30

8th Semester				
Code	Course Unit	Type	Hours /week	ECTS
1	Degree Dissertation	C	4	20
2	Work Placement (24 weeks / 6 months)	C	-	10
Total			4	30

C= Compulsory course unit

E/C = Elective compulsory course unit

ECTS= European Credit Transfer System

Department of Business Administration

The department has operated since 1983 and comprises seventeen (17) posts for permanent members of Faculty. It employs three (3) administrators at the secretariat, one (1) technician, and collaborates with about forty (40) Scientific and Laboratory Associates.

The department delivers a postgraduate course leading to an MSc in International Business in collaboration with Coventry University, in the United Kingdom.

Field of Study

Studies cover the management discipline with specialization in applications in businesses in both the private and public sector.

Career Opportunities

Business Administration graduates have acquired specialized scientific and technical knowledge in order to collaborate with other executives or work autonomously and pursue careers as:

- ◆ executives in small-medium enterprises,
- ◆ executives in large public and/or private enterprises,
- ◆ executives in local authorities businesses,
- ◆ executives in the public sector organizations,
- ◆ instructors at all levels of education, according to legislation in force,

- ◆ members of research teams in their field of study;

And carry out the following activities:

- ◆ Defining the business field.
- ◆ Planning, organizing, leading and controlling administration in enterprises.
- ◆ Analysing human behaviour problems at work.
- ◆ Promoting compensation systems and employee empowerment while dealing with productivity problems.
- ◆ Introducing business recruitment practices while dealing with productivity problems.
- ◆ Analyzing production systems and procedures and production management issues.
- ◆ Analyzing business financial management problems.

In addition, Business Administration graduates are allowed to receive Accountant's accreditations after completing certain years of practical experience in the field.



Contact Details

+30-2410-684235, +30-2410-684429 (fax)

secry-business@teilar.gr

T.E.I. of Larissa, 411 10 Larissa, Greece

www.teilar.gr

1st Semester				
Code	Course Unit	Type	Hours /week	ECTS
M11	Business Organisation & Management I	C	4	5
E12	Economics I	C	4	5
E13	Accounting I	C	4	5
E14	Civil Law	C	4	5
Q15	Mathematics for Economics	C	4	5
Q16	Introduction to Informatics	C	4	5
Total			24	30

2nd Semester				
Code	Course Unit	Type	Hours /week	ECTS
M21	Business Organisation & Management II	C	4	5
E22	Economics II	C	4	5
E23	Accounting II	c	4	5
E24	Labour Law	C	4	5
Q25	Statistics I	C	4	5
Q16	Contemporary Office Applications	C	5	5
Total			25	30

3rd Semester				
Code	Course Unit	Type	Hours /week	ECTS
Q31	Business Communications	C	5	5
F32	English Terminology I	C	4	5
E33	Computerized Accounting Applications	C	5	5
E34	Business Law	C	4	5
Q35	Statistics II		4	5
Q36	Database Management	C	4	5
Total			26	30

4th Semester				
Code	Course Unit	Type	Hours /week	ECTS
M41	Administrative Law & Public Administration	C	4	5
E42	Public Sector Economy - International Financial Relations	C	4	5
E43	Accounting for Business	C	4	5
F44	English Terminology II	C	4	5
Q45	Operational Research		4	5
M46	Small-medium Enterprise Management	E/C	4	5
E47	European Law - International Organisations		4	5
Total			24	30

5th Semester				
Code	Course Unit	Type	Hours /week	ECTS
M51	Human Resource Management	C	5	6
M52	Control & Quality Assurance Systems	C	5	6
E53	Taxation Accounting	C	5	6
M54	Marketing I	C	5	6
Q25	Database Management Applications	E/C	5	6
Q26	Decision Support Systems			
Total			25	30

6th Semester				
Code	Course Unit	Type	Hours /week	ECTS
M61	Total Quality Management	C	5	6
M62	Business Planning	C	5	6
M63	Project Management	c	5	6
Q64	Management Information Systems	c	5	6
M65	Marketing II	E/C	5	6
M66	Logistics			
Total			25	30

7th Semester				
Code	Course Unit	Type	Hours /week	ECTS
M71	Production Management	C	5	6
M72	Graduate Seminar	C	5	6
M73	Financial Management	C	5	6
E74	Cost Accounting	C	5	6
M75	Strategic Management	E/C	5	6
M76	Public Relations			
Total			25	30

8th Semester				
Code	Course Unit	Type	Hours /week	ECTS
1	Degree Dissertation	C	4	12
2	Work Placement (24 weeks / 6 months)	C	-	18
Total			4	30

C= Compulsory course unit

E/C = Elective compulsory course unit

ECTS= European Credit Transfer System

Department of Tourism Enterprises

The department has operated since 1983 and employs nine (9) permanent members of Faculty, three (3) administrators at the secretariat and two (2) technician, and about twenty-five (25) Scientific and Laboratory Associates under contract.

Field of Study

Studies, on the one hand, cover core areas of science and arts such as Economics, IT, Statistics, Law, Tourism Geography, Professional Ethics, Foreign Languages, etc., as applied to tourism. On the other hand, speciality areas are introduced, such as Hotel Software, Air ticketing, Winery and Bar Operation, Travel Agencies and Hotel Management, Conference & Banqueting Management, etc, focusing mainly on the scientific field of Tourism Enterprise management, in terms of target accomplishment, time and resources management, promotion and advertising and human resources and materials management.

Career Opportunities

Graduates of the department have acquired specialised scientific and technical knowledge and are eligible to work autonomously or in collaboration with other scientists, in the management of tourism enterprises and organisations, in both the public and private sector, such as:

- ◆ Hotels (management, guest accounts, housekeeping, supply chain, etc).
- ◆ Travel agencies (management, ticketing, tourism package promotion, tour leaders, etc).
- ◆ Catering enterprises (restaurants, coffee shops, etc) in

luxury tourism resorts.

- ◆ Hotel and catering provisions in ships and cruises.
- ◆ Conferences, leisure events and recreation.

They are also qualified to:

- ✓ Provide services to the Ministry of Tourism Development and the Greek Tourism Organisation departments.
- ✓ Prepare feasibility studies for the establishment or expansion of tourism enterprises.
- ✓ Organise and promote local and regional tourism development.
- ✓ Conduct market research regarding sales and financing opportunities for tourism products and services.
- ✓ Manage and supervise tourism enterprise personnel.
- ✓ Take up positions in education according to legislation in force.
- ✓ Participate in research committees of their expertise.
- ✓ Get promoted in the administrative hierarchy.



Contact Details

+30-2410-684232

secry-tourist@teilar.gr

T.E.I. of Larissa, 411 10 Larissa, Greece

www.teilar.gr

1st Semester				
Code	Course Unit	Type	Hours /week	ECTS
151	Microeconomics	C	3	5
152	Accounting	C	5	5
153	Introduction to Information Technology	C	5	6
154	Mathematics for Economics	C	5	5
155	Tourism Fundamentals	C	3	6
156	Principles of Business Management	E/C	3	3
157	Professional Ethics			
Total			24	30

2nd Semester				
Code	Course Unit	Type	Hours /week	ECTS
251	Accounting for Business	C	5	5
252	Business Statistics	C	4	5
253	World Tourism Geography	C	3	5
254	Catering Management	C	5	5
255	Macroeconomics	C	3	5
256	Business Law	E/C	3	5
257	Tourism Organisations & Associations			
Total			23	30

3rd Semester				
Code	Course Unit	Type	Hours /week	ECTS
351	Human Resource Management	C	3	5
352	Food & Beverage	C	2	5
353	Food & Beverage Provisions	C	6	5
354	Tourism Law	C	5	5
355	Business Finance	C	4	5
356	Hotel Architecture & Furnishing	E/C	3	5
357	Business Communications in Tourism Enterprises			
Total			23	30

4th Semester				
Code	Course Unit	Type	Hours /week	ECTS
451	Cost Analysis-Controlling	C	4	5
452	Front Office I	C	3	3
453	Housekeeping	C	3	5
454	Restaurant Management	C	5	7
455	Tourism Management I - Travel Agencies	C	4	5
456	Animation - Leisure	E/C	4	5
457	Travel Guides			
458	Labour Law			
Total			23	30

5th Semester				
Code	Course Unit	Type	Hours /week	ECTS
551	Tourism Marketing	C	4	5
552	ESP - English Terminology I	C	5	5
553	Front Office II	C	5	5
554	Winery and Bar Operation	C	5	7
555	CRS Reservations	C	3	3
556	French Terminology I	E/C	5	5
557	German Terminology I			
558	Italian Terminology I			
Total				
Total			27	30

6th Semester				
Code	Course Unit	Type	Hours /week	ECTS
651	ESP - English Terminology II	C	5	6
652	Hotel Marketing	C	5	5
653	Computer Applications in Tourism Management	C	3	3
654	Air Fairs -Ticketing	C	4	6
655	Statistical Data Processing	E/C	3	4
656	Economical - Technical Studies			
657	French Terminology II	E/C	5	6
658	German Terminology II			
659	Italian Terminology II			
Total				
Total			25	30

7th Semester				
Code	Course Unit	Type	Hours /week	ECTS
751	Tourism Economy	C	4	6
752	Graduate Seminar	C	4	4
753	Conference & Banqueting Management	C	4	6
754	Tourism Management II - Hotels	C	5	6
775	Tourism Sociology	C	3	6
756	Total Quality Management - Entrepreneurship	E/C	2	2
757	French Tourism Terminology			
758	German Tourism Terminology			
759	Italian Tourism Terminology			
Total				
Total			22	30

8th Semester				
Code	Course Unit	Type	Hours /week	ECTS
1	Degree Dissertation	C	4	10
2	Work Placement (24 weeks / 6 months)	C	-	10
Total			4	30

C= Compulsory course unit

E/C = Elective compulsory course unit

ECTS= European Credit Transfer System

Department of Project Management

It was founded in September 2000 (Presidential Decree 234/13-9-2000) and financed by the 2nd Community Support Framework as part of the Operational Programme for Education & Initial Training. Instruction started in the winter semester of academic year 2000-2001. It is staffed by eleven (11) permanent members of Faculty, three (3) administrators at the secretariat and one (1) technician, and employs about forty-six (46) Scientific and Laboratory Associates.

The department delivers two postgraduate courses – MSc in Management and MBA (Master of Business Administration) – in collaboration with Staffordshire University, in United Kingdom. Additionally, it participates and organises a great number of conferences, seminars and events.

Field of Study

Studies cover the nature and processes of project and operations management in terms of target accomplishment, project scheduling, resources planning, cost management, human resource management, material and environmental resources, and place special emphasis on the application of scientific and analytical methodologies with the use of IT.

Career Opportunities

Project Management graduates are expected to have all necessary scientific and technological knowledge and practical skills in order to pursue a career as project managers in the

public and/or private sector. In particular Project Managers are qualified to:

- ◆ plan the necessary resources for the successful implementation of projects by applying scientific / analytical methods and setting achievable targets,
- ◆ apply up-to-date scientific and technological methods and practices in the management of projects aiming at effective management and target accomplishment,
- ◆ make decisions on the management and allocation of resources (financial, human, material, etc.) available throughout the project in order to achieve their optimum utilisation,
- ◆ apply the necessary knowledge for developing and implementing project monitoring mechanisms and processes,
- ◆ evaluate and introduce new IT and management technologies and tools in project and operations management,
- ◆ undertake project scheduling studies regarding private organisations / enterprises, as well as, projects within public and / or E.U. organisations.



Contact Details

+30-2410-684237

secry-project@teilar.gr

T.E.I. of Larissa, 411 10 Larissa, Greece

<http://dde.sdo.teilar.gr>

1st Semester				
Code	Course Unit	Type	Hours /week	ECTS
101	Microeconomics	C	4	5
102	Organizational Behavior	C	4	5
103	Introduction to Information Technology	C	4	5
104	Financial Accounting I	C	4	5
105	Mathematics for Economists	C	4	5
106	Introduction to Project Management	C	4	5
Total			24	30

2nd Semester				
Code	Course Unit	Type	Hours /week	ECTS
201	Statistics for Business	C	5	5
202	Business Management	C	3	5
203	Database Management Systems	C	5	5
204	Financial Accounting II	C	4	5
205	Elements of Business Law	C	3	5
216	Telematics & Automation Technologies	E/C	3	5
226	Technology and society			
Total			23	30

3rd Semester				
Code	Course Unit	Type	Hours /week	ECTS
301	Project Scheduling	C	4	6
302	Human Resource Management	C	3	4
303	Managerial Accounting	C	5	6
304	Organization of Production Systems	C	4	6
305	Computer Analysis of Statistical & Economical Data	C	4	3
316	Entrepreneurship	E/C	4	5
326	European Union & Enterprises		3	
Total			24/3	30

4th Semester				
Code	Course Unit	Type	Hours /week	ECTS
401	Financial Management & Project Control	C	4	6
402	Management Information Systems	C	4	5
403	Computer Applications in Accounting	C	4	4
404	Total Quality Management	C	4	6
405	English Terminology I	C	4	4
416	Industrial Psychology	E/C	3	5
426	Ergonomics			
Total			23	30

5th Semester				
Code	Course Unit	Type	Hours /week	ECTS
501	Logistics	C	4	5
502	Energy Resources Management & Environmental Protection	C	3	5
503	Operations Research	C	4	5
504	English Terminology II	C	4	5
515	Geographical Information Systems	E/C	4	5
525	Occupational Health & Safety			
516	Quality Control & Assurance	E/C	4	5
526	Systems Reliability - Maintenance & Replacement			
Total			23	30

6th Semester				
Code	Course Unit	Type	Hours /week	ECTS
601	Business Process Reengineering	C	4	6
602	Decision Support Systems	C	5	6
603	Investment Appraisal	C	5	6
614	Innovation and Technology Management	E/C	4	6
624	Risk Management			
615	Communications & Human Interaction Techniques	E/C	6	6
625	Technical & Economical Studies for Construction Projects		5	
Total			24/3	30

7th Semester				
Code	Course Unit	Type	Hours /week	ECTS
701	Graduate Seminar	C	4	6
702	Contract Negotiation Strategies	C	4	6
703	Integrated Applications in Project Management	C	6	6
714	Strategic Management of Information & Telecommunications Systems	E/C	4	6
724	Production Networks - CAM			
715	Enterprise Resource Planning	E/C	5	6
725	Simulation Methodologies & Techniques			
Total			23	30

8th Semester				
Code	Course Unit	Type	Hours /week	ECTS
1	Degree Dissertation	C	4	20
2	Work Placement (24 weeks / 6 months)	C	-	10
Total			4	30

C= Compulsory course unit

E/C = Elective compulsory course unit

ECTS= European Credit Transfer System



School of Health Care Professions

The School of Health Care Professions comprises two academic departments:

- ◇ **Department of Medical Laboratories**
- ◇ **Department of Nursing**



Department of Medical Laboratories

The department has operated since 1983 and is staffed by ten (10) permanent members of Faculty, two (2) administrators at the secretariat, four (4) technicians and approximately a hundred (100) Scientific and Laboratory Associates under contract.

Field of Study

Studies cover the field of medical laboratory science as it is applied in the sectors of haematology, microbiology, biochemistry, immunology, clinical chemistry, and endocrinology testing and analysis. The department aims at developing and promoting the medical laboratories disciplines through applied research.

Career Opportunities

Graduates have acquired the necessary scientific and technological knowledge in order to be eligible for employment at medical laboratories in the fields of Microbiology – Virology, Biochemistry, Haematology – Blood Bank, Immunology – Histopathology, Nuclear Medicine, Hormonology – Endocrinology, Toxicology, Pathology – Genetics, and Human Molecular Biology. They are trained to apply scientific methods and perform laboratory tests and analyses, and have the know-how to evaluate quality results. In particular, medical laboratory technologists:

- ◆ Give patients instructions for their proper preparation and proper collection of the specimen. They are able to collect biological specimens, receive and prepare them for analysis, prepare and test the necessary laboratory instruments and

operate them, perform a variety of analysis with the use of necessary materials, and are responsible for the proper technological procedure followed during the clinical analysis.

- ◆ Give blood donors instructions for their proper preparation, in Hematology – Blood Bank laboratory, and prepare and process blood transfusion components, etc.
- ◆ Are responsible for the proper breeding, nutrition and living conditions of guinea-pigs, in guinea-pig laboratories. They prepare their reproduction, medical treatment and anaesthesia for operation, in compliance with international regulations on animal protection and animal testing.
- ◆ Participate in the design of laboratories, and the selection of equipment (instruments), in the selection of the most appropriate laboratory methods, and materials, in quality control procedures, in training of laboratory staff and in research carried out in laboratories.
- ◆ Supervise the proper and regular maintenance and cleaning of the instruments and machines and apply occupational health and safety rules.
- ◆ Are employed in education under the legislation in force and are eligible for promotion in the work hierarchy.



Contact Details

+30-2410-684254, +30-2410-684454, +30-2410-684367 (fax)

secry-medlab@teilar.gr

T.E.I. of Larissa, 411 10 Larissa, Greece

www.medlab.gr

1st Semester				
Code	Course Unit	Type	Hours /week	ECTS
151	Medical Physics	C	5	6.0
152	Mathematics	C	4	5.0
153	Computer Applications	C	7	6.5
154	Chemistry	C	6	6.0
155	Biology - Genetics	C	5	6.5
Total			27	30

2nd Semester				
Code	Course Unit	Type	Hours /week	ECTS
251	Anatomy I	C	3	5.0
252	Physiology I	C	3	4.5
253	Biochemistry I	C	6	5.5
254	Culture Media	C	4	5.0
255	General Microbiology	C	5	5.5
256	Guinea Pigs	C	4	4.5
Total			25	30

3rd Semester				
Code	Course Unit	Type	Hours /week	ECTS
351	Anatomy II	C	3	5.0
352	Physiology II	C	3	5.0
353	Biochemistry II	C	6	5.5
354	Public Health Care	C	2	4.0
355	Medical Microbiology I	C	5	5.0
356	Laboratory Instrument Technology	C	4	5.5
Total			23	30

4th Semester				
Code	Course Unit	Type	Hours /week	ECTS
451	Histopathology I	C	5	6.5
452	Blood Sampling	c	4	3.5
453	Clinical Chemistry I	C	6	5.5
454	Hematology I	C	5	5.5
455	Medical Microbiology II	C	5	5.0
456	Foreign Language - Terminology	C	3	4.0
Total			28	30

5th Semester				
Code	Course Unit	Type	Hours /week	ECTS
551	Histopathology II	C	5	5.5
552	Health Care Psychology	C	2	2.0
553	Clinical Chemistry II	C	6	6.5
554	Hematology II	C	5	5.5
555	Virology	C	5	6.5
556	Bioethics & Laboratory Safety	C	2	4.0
Total			25	30

6th Semester				
Code	Course Unit	Type	Hours /week	ECTS
651	Histopathology III	C	6	6.0
652	Immunology	C	6	6.0
653	Clinical Chemistry III	C	6	6.0
654	Hematology III	C	5	6.0
655	Medical Biotechnology - Molecular Basis of Genetic Disease	C	5	6.0
Total			28	30

7th Semester				
Code	Course Unit	Type	Hours /week	ECTS
751	Histopathology IV	C	5	6.0
752	Mycology	C	4	4.5
753	Clinical Chemistry IV	C	6	6.0
754	Blood Donation	C	5	5.0
755	Parasitology	C	4	4.5
756	Industrial Relations	C	2	4.0
Total			26	30

8th Semester				
Code	Course Unit	Type	Hours /week	ECTS
1	Degree Dissertation	C	-	10
2	Work placement (24 weeks / 6 months)	C	-	20
Total			-	30

C= Compulsory course unit

E/C = Elective compulsory course unit

ECTS= European Credit Transfer System

Department of Nursing

The department has operated since 1983 and is staffed by with eight (8) permanent members of Faculty, three (3) administrators at the secretariat, one (1) technician and approximately a hundred (100) Scientific and Laboratory Associates under contract.

The department of Nursing and the department of Medicine at the University of Thessaly have jointly organised and delivered a Postgraduate Course on "Primary Health Care" since 2005-06, which aims at graduates of Health Care disciplines from Greek or foreign HE institutions. It is a full time course and the language of instruction and exams is Greek.

In addition, the department organises and delivers a 400-hour Continuing Education Programme entitled "Mental Health – Special Treatment" through the T.E.I. of Larissa Research & Education Committee, every year.

Field of Study

Studies cover the Nursing discipline in the broad Nursing Care Area.

Career Opportunities

Graduate Nurses are qualified to work in Primary, Secondary and Third level health care either as employees at Hospitals in

the private sector and public sector, or as freelancers of general practice. They are eligible to work as sector Nurse practitioners after taking short-term intensive training.

They are also skilled to:

- ◆ Work in education according to legislation in force.
- ◆ Progress in the hierarchy according to legislation in force.
- ◆ Carry out studies on research aiming at promoting Nursing discipline and methodology.



Contact Details

+30-2410-684251, +30-2410-684252, +30-2410-613986 (fax)

secry-nurse@teilar.gr

T.E.I. of Larissa, 411 10 Larissa, Greece

www.teilar.gr

1st Semester				
Code	Course Unit	Type	Hours /week	ECTS
151	Anatomy I	C	5	7
152	Physiology I	C	5	7
153	Psychology	C	2	3
154	Introduction to Nursing	C	6	7
155	Clinical Biochemistry	C	2	3
156	Biostatistics	C	2	3
Total			22	30

2nd Semester				
Code	Course Unit	Type	Hours /week	ECTS
251	Physiology II	C	5	7
252	Anatomy II	C	5	7
253	General Microbiology	C	3	3
254	Pharmacology	C	2	3
255	Fundamental Nursing	C	7	7
256	Research Methodology	C	3	3
Total			25	30

3rd Semester				
Code	Course Unit	Type	Hours /week	ECTS
351	Pathology I	C	4	5
352	Health Care Informatics	C	4	5
353	Biology	C	2	4
354	Health Care Ethics	C	2	4
355	Clinical Symptomatology - Semeiotics	C	4	5
356	Community Nursing I	C	8	7
Total			24	30

4th Semester				
Code	Course Unit	Type	Hours /week	ECTS
451	Pediatrics	C	2	3
452	Surgery I	C	2	3
453	Surgical Nursing I	C	9	8
454	Pathological Nursing I	C	9	8
455	Counseling Nursing	C	2	3
456	Nursing Administration	E/C	3	5
457	English Terminology		2	
Total			27/26	30

5th Semester				
Code	Course Unit	Type	Hours /week	ECTS
551	Surgery II	C	2	3
552	Surgical Nursing II	C	9	8
553	Obstetrics - Gynecology	C	2	3
554	Neurology	C	3	5
555	Pediatric Nursing	C	7	8
556	Environment & Health	E/C	2	3
557	Epidemiology			
Total			25	30

6th Semester				
Code	Course Unit	Type	Hours /week	ECTS
651	Pathology II	C	3	4
652	Pathological Nursing II	C	8	8
653	Psychiatry	C	3	4
654	Mental Health Nursing	C	6	6
655	Obstetrics & Gynecology Nursing	C	5	5
656	Health Sociology	E/C	2	3
657	X- Ray Therapy Methods			
658	History of Nursing			
Total			27	30

7th Semester				
Code	Course Unit	Type	Hours /week	ECTS
751	Health Care	C	2	4
752	Intensive Care Unit Nursing	C	8	8
753	Community Nursing II	C	9	8
754	Seminars	C	3	2
755	Nutrition & Dietetics	C	2	4
756	Human Rights	E/C	2	4
757	Health Care Economics			
Total			26	30

8th Semester				
Code	Course Unit	Type	Hours /week	ECTS
1	Degree Dissertation	C	5	10
2	Work Placement (24 weeks / 6 months)	C	-	20
Total			5	30

C= Compulsory course unit

E/C = Elective compulsory course unit

ECTS= European Credit Transfer System



School of Agricultural Technology

The School of Agricultural Technology comprises three academic departments:

- ◇ **Department of Agricultural Machinery & Irrigation**
- ◇ **Department of Animal Production**
- ◇ **Department of Crop Production**



Department of Agricultural Machinery & Irrigation

The department was established in 1983 and it is staffed by seventeen (17) permanent Faculty members, two (2) administrators at the secretariat, six (6) technicians and approximately thirty (30) Scientific and Laboratory Associates under contract.

The department organises a joint postgraduate Master course in "Production of quality animal and plant products in Mediterranean environment" in collaboration with the Agricultural School of Bari University in Italy.

The departments of Agricultural Machinery & Irrigation and Forestry & Environmental Management from T.E.I. of Larissa along with the department of Agriculture, Plant Production & Aquatic Environment from University of Thessaly, and the department of Aquaculture & Fisheries from T.E.I. of Messolonghi jointly organise a postgraduate course leading to a degree in "Sustainable Management of Aquatic Environment".

Field of Study

Studies cover the field of application of both exact and biology sciences, focusing, on the one hand, on the building, selection and use of the most appropriate machinery in any case. On the other hand, special emphasis is placed on the selection and implementation of irrigation techniques, aiming to support the development of crop production and animal breeding, as well as the handling of the products received.

Career Opportunities

Graduates have all the necessary knowledge and skills so as to meet the demands in their field of study and, within their career as freelancers or employees, are skilled to:

- ◆ design, study and build agricultural machines and tools for soil cultivation, harvesting, transportation and initial processing of agricultural products, machines processing waste and by-products, animal breeding and greenhouse installations and irrigation systems equipment, as well as tools and instruments for the control of agricultural products, on the basis of environmental protection and sustainable development.
- ◆ provide expert opinion on behalf of agencies that use all kinds of agricultural mechanical equipment or work in land reclamation and irrigation.
- ◆ participate in or carry out themselves and supervise agricultural-technical studies, which deal with the establishment of agricultural machinery industries, the suitability and feasibility of agricultural mechanical equipment, as well as field irrigation and drainage projects.
- ◆ participate in or carry out themselves and supervise studies on greenhouse installation projects.
- ◆ monitor and survey plumbing and engineering construction projects related to agriculture.
- ◆ get engaged in any activity related to the technological advances in their field of specialisation.



Contact Details

+30-2410-684275, +30-2410-613153 (fax)

secry-machine@teilar.gr

T.E.I. of Larissa, 411 10 Larissa, Greece

www.teilar.gr

1st Semester				
Code	Course Unit	Type	Hours /week	ECTS
121	Plant Science I	C	6	7
122	Mathematics	C	3	5
123	Agricultural Tractor	C	5	6
124	Engineering Drawing	C	6	6
125	Computer Programming	C	6	6
Total			26	30

3rd Semester				
Code	Course Unit	Type	Hours /week	ECTS
321	Statistics - Experimental Design	C	3	4
322	Strength & Properties of Mechanical & Biological Materials	C	5	6
323	Soil Mechanics	C	4	5
324	Agricultural Machinery	C	5	5
325	Agricultural Hydraulics	C	4	5
326	Electrical Technology	C	4	5
Total			25	30

5th Semester				
Code	Course Unit	Type	Hours /week	ECTS
521A	Terrain Vehicle Mechanics	E/C	6	7
521B	Post Harvest Processing Mechanics			
522	Environmental Control of Agricultural Installations	C	5	6
523	Irrigation Fundamentals	C	4	5
524	Harvesting Machinery	C	5	6
525	Electronic Systems for Control & Failure Detection in Farm Machinery	C	6	6
Total			26	30

7th Semester				
Code	Course Unit	Type	Hours /week	ECTS
721	Agricultural Machinery Design & Construction	C	5	5
722	Agricultural Machinery Testing	C	5	5
723	Agricultural Machinery Management	C	5	6
724A	Water Resources Management	E/C	4	5
724B	Storage and Handling of Agricultural Crops			
725	Nature & Human Values	C	3	4
726A	Agricultural Crops & Materials Handling Machinery	E/C	4	5
726B	Drying of Agricultural Crops			
Total			26	30

2nd Semester				
Code	Course Unit	Type	Hours /week	ECTS
221	Mechanical Workshop I	C	4	5
222	Mechanics (Statics-Dynamics)	C	4	5
223	Agricultural Engineering E.U. Directives	C	3	4
224	Livestock Production & Nutrition	C	5	5
225	Transmission Mechanisms & Systems	C	4	5
226	Internal Combustion Engines	C	5	6
Total			25	30

4th Semester				
Code	Course Unit	Type	Hours /week	ECTS
421	Feasibility Studies - Principles of Economics	C	4	5
422	Agricultural Buildings & Constructions	C	4	5
423	Instrumentation & Measurements	C	5	5
424	Mechanical Workshop II	C	4	5
425	Hydraulic Mechanisms	C	5	5
426	Plant Science II	C	4	5
Total			26	30

6th Semester				
Code	Course Unit	Type	Hours /week	ECTS
621	Irrigation Methods	C	5	5
622A	Land Reclamation Machinery	E/C	5	5
622B	Agricultural Products First Processing Equipment			
623A	Field Drainage	E/C	4	5
623B	Environmental Protection - Farming Waste Management			
624	Seminar	C	4	5
625A	English for Specific & Academic Purposes	E/C	4	5
625B	Foreign Language for Specific & Academic Purposes			
626	Marketing of Agricultural Machinery & Products	C	4	5
Total			26	30

8th Semester				
Code	Course Unit	Type	Hours /week	ECTS
821	Degree Dissertation	C	4	10
822	Work Placement (24 weeks / 6 months)	C	-	20
Total			4	30

C= Compulsory course unit

E/C = Elective compulsory course unit

ECTS= European Credit Transfer System

Department of Animal Production

The department was established in 1983 and employs fourteen (14) permanent Faculty members, two (2) administrators at the secretariat, five (5) technicians and approximately seventy (70) Scientific and Laboratory Associates under contract.

The department organises a joint postgraduate Master course in "Production of quality animal and plant products in Mediterranean environment" in collaboration with the Agricultural School of Bari University in Italy. In addition, it organises joint postgraduate Doctorate programmes in collaboration with the University of Perugia, in Italy.

Field of Study

Studies cover all fields related to animal science, while emphasising the application of up-to-date technological methods in the breeding, nutrition, genetic improvement, reproduction and health of farm animals, mainly, as well as game animals, pets, fish, exotic animals and laboratory animals. Production, processing and standardisation methods for livestock products are also examined in the course.

Career Opportunities

Graduates can be employed in the field of their studies as freelancers or executives and:

- ◆ apply up-to-date technological and scientific methods, as well as managerial practices, in animal production, and animal products processing and quality control.
- ◆ apply up-to-date technological and scientific methods in improving, breeding productivity and output.

- ◆ apply rational nutrition methods, in economic terms, on the basis of special dietary products for the various stage of animal production process.
- ◆ undertake the environmental and legal problems livestock enterprises and holdings are facing, regarding their establishment, operation, modernisation and resettlement, in local, regional and national level.
- ◆ participate, along with other scientists, in technological research, development and application of innovation in the field of animal production.
- ◆ carry out and supervise the implementation of agricultural-animal breeding studies and organise animal breeding enterprises as well as animal product processing ones.
- ◆ work in marketing and promotion of animal breeding equipment, supplies, medicine and other chemical and biological products.
- ◆ work in the production and marketing of reproduction animals, sperm, embryos, fur and leather, as well as in the filed of artificial insemination.
- ◆ apply milk production control within the Genetic Improvement programme.



Contact Details

+30-2410684292, +30-2410684367 (fax)

secry-animal@teilar.gr

T.E.I. of Larissa, 411 10 Larissa, Greece

www.teilar.gr

1st Semester				
Code	Course Unit	Type	Hours /week	ECTS
181	Agricultural Chemistry	C	3	3.0
182	Microbiology - Immunology	C	6	7.0
183	Applied Mathematics	C	4	4.5
184	Farm Animal Anatomy	C	6	7.0
185	Agricultural Machinery	C	4	4.5
186	Zoology	C	3	4.0
Total			26	30

2nd Semester				
Code	Course Unit	Type	Hours /week	ECTS
281	Biochemistry	C	5	5.0
282	Farm Animal Physiology	C	6	7.0
283	Plant Science	C	4	4.5
284	Soil Science	C	4	3.0
285	Parasitology of Farm Animals	C	6	7.5
286	Computer Programming I	C	4	3.0
Total			29	30

3rd Semester				
Code	Course Unit	Type	Hours /week	ECTS
381	Farm Animal Nutrition I	C	6	7.5
382	Biometry	C	4	4.0
383	Forage Plants - Pasturages	C	4	4.0
384	Farm Accounting	C	4	4.5
385	Livestock Genetics	C	6	5.5
386	Computer Programming II	C	4	4.5
Total			28	30

4th Semester				
Code	Course Unit	Type	Hours /week	ECTS
481	Farm Animal Nutrition II	C	7	7.5
482	Farm Animal Reproduction	C	6	7.5
483	Farm Animal Pathology	C	5	5.5
484	Animal Breeding Installations & Equipment	C	5	5.0
485	Elective Compulsory unit	C	4	4.5
Total			27	30

5th Semester				
Code	Course Unit	Type	Hours /week	ECTS
581	Milk Production Technology	C	6	7.0
582	Pharmacology	C	4	6.0
583	Sheep & Goat Raising	C	6	7.0
584	Meat Production Technology	C	6	7.0
585	Professional Ethics	C	2	3.0
Total			24	30

6th Semester				
Code	Course Unit	Type	Hours /week	ECTS
681	Cattle Production	C	6	7.5
682	Pig Production	C	6	7.5
683	Pestiferous Diseases - Livestock Hygiene	C	5	5.0
684	Elective Compulsory unit	C	4	5.0
685	Ecology - Environmental Protection	C	2	3.0
686	Marketing of Livestock Products	C	2	2.0
Total			25	30

7th Semester				
Code	Course Unit	Type	Hours /week	ECTS
781	Genetic Improvement	C	6	7.5
782	Aviculture	C	6	7.5
783	Graduate Seminar	C	4	2.5
784	English Terminology	C	3	4.5
785	Technical - Economical Analysis	C	4	5.0
786	Farm Management	C	3	3.0
Total			26	30

8th Semester				
Code	Course Unit	Type	Hours /week	ECTS
886	Degree Dissertation	C	4	15
887	Work Placement (24 weeks / 6 months)	C	-	15
Total			4	30

Elective Compulsory Course Units				
Code	Course Unit	Type	Hours /week	ECTS
881	Livestock Product Control	C	4	7.5
882	Horse Breeding	C	4	7.5
883	Aquaculture	C	4	2.5
884	Pet Animals	C	4	4.5
885	Apiculture	C	4	5.0

C= Compulsory course unit

E/C = Elective compulsory course unit

ECTS= European Credit Transfer System

Department of Crop Production

The department was established in 1983, and in 2000 it modified the course within Operational Programme for Education & Initial Training, which was financed by the 2nd Community Support Programme and the Ministry of National Education & Religious Affairs. The human resources include twenty three (23) permanent Faculty members, two (2) administrators at the secretariat, three (3) technicians and approximately forty (40) Scientific and Laboratory Associates under contract.

Field of Study

Studies focus on agriculture and particularly, on agricultural production with a special emphasis placed on field crops and fruit tree and vegetable crops, and the application of environment-friendly cultivation techniques and practices

Career Opportunities

On completion of their studies the graduates will have acquired specialised knowledge and will be able to work in the field of agriculture and carry out study and research and apply technology, either as freelancers or in collaboration with other scientists and bodies. In particular they will be able to consider a career in:

- ◆ Production, standardization, conservation, quality certification and marketing of crop products.
- ◆ Prevention and control of harmful effects that biotic (disease, insects, pests) and non-biotic (draught, excessive

humidity, etc) adverse conditions have upon crop production.

- ◆ Production of standardised propagation material.
- ◆ Marketing of fertilizers, plant protection products, propagation material, and other products that contribute to optimum cultivation techniques.
- ◆ Agricultural - economical studies that aim at the development and provision of proper equipment for agricultural installations.
- ◆ Evaluation of damage caused by biotic and/or non-biotic adverse conditions in crops.
- ◆ Soil Analysis, plant tissue analysis and analysis of irrigation water.
- ◆ Participation in studies and construction of landscape projects.
- ◆ Participation in agriculture research activities.
- ◆ Issuing prescriptions for plant protection products.
- ◆ Development and dissemination of up-to-date cultivation methods, such as organic agriculture and sustainable agriculture.
- ◆ Control and standardisation of organic products.
- ◆ Production and marketing of organic fertilisers and insecticides for organic cultivations.
- ◆ Management and protection of the agricultural system and ecosystem in general.



Contact Details

+30-2410-684273

secry-plant@teilar.gr

T.E.I. of Larissa, 411 10 Larissa, Greece

www.teilar.gr

1st Semester				
Code	Course Unit	Type	Hours /week	ECTS
121	Agricultural Chemistry	C	5	5
122	Ecology	C	3	4
123	Plant Morphology	C	5	6
124	Agricultural Meteorology	C	3	4
125	Biometry	C	4	6
126	Computer Science & Applications	C	5	5
Total			25	30

2nd Semester				
Code	Course Unit	Type	Hours /week	ECTS
221	Plant Physiology	C	4	5
222	Orchard Plants Cultivation	C	5	5
223	Genetics	C	4	5
224	Agricultural Policy & Economy	C	3	4
225	Field Crops Cultivation	C	5	6
226	Agriculture Systems	C	4	5
Total			25	30

3rd Semester				
Code	Course Unit	Type	Hours /week	ECTS
321	Soil Science	C	5	5
322	Systematic Botany	C	4	5
323	Agriculture Accounting & Technical-Economical Analysis	C	3	3
324	Scientific Methodology & Experimentation	C	4	6
325	Agricultural Machinery	C	4	5
326	Agricultural Zoology & Entomology	C	5	6
Total			25	30

4th Semester				
Code	Course Unit	Type	Hours /week	ECTS
421	Vegetable Crops	C	5	5
422	Plant Pathology	C	5	6
423	Agricultural Business Management	C	3	3
424	Crop Fertilization & Nutrition	C	5	6
425	Plant Biotechnology	C	4	5
426	Agricultural Product Standardization	E/C 1 out of 3	4	5
427	Professional Ethics			
428	Production and Distribution of Crop-protection Products			
Total			26	30

5th Semester				
Code	Course Unit	Type	Hours /week	ECTS
521	Plant Breeding	C	4	4
522	Floriculture & Horticulture	C	5	5
523	Computer Based Applications in Plant Production	C	4	4
524	Weed Science	C	4	5
525	Seed Production	E/C 1 out of 3	4	6
526	Plant Propagation			
527	Safe & Effective Use of Plant Protection Products			
528	Plant Protection of Field Crops	E/C 1 out of 3	4	6
529	Plant Protection of Fruit & Nut Crops			
530	Integrated & Biological Methods of Pest Control			
Total			25	30

6th Semester				
Code	Course Unit	Type	Hours /week	ECTS
621	Plant Protection Products	C	5	6
622	Agricultural Products Processing	C	4	5
623	English Agricultural Terminology	C	3	5
624	Vegetable, Medicinal & Aromatic Crops	E/C 1 out of 3	7	7
625	Deciduous Fruit Tree Crops			
626	Determination Methods of Pest and Diseases	E/C 1 out of 3	7	7
627	Grain Crops			
628	Special Vegetable Crops			
629	Managing Diseases & Pests in Greenhouse Crops			
Total			26	30

7th Semester				
Code	Course Unit	Type	Hours /week	ECTS
721	Applied Soil Science	C	5	6
722	Irrigation & Drainage	C	4	5
723	Agricultural Products Marketing	C	2	5
724	Grain Legumes and Forage Plants	E/C 1 out of 3	7	7
725	Evergreen Fruit Tree Crops			
726	Pest Management of Stored-grain Insects	E/C 1 out of 3	7	7
727	Industrial Crops & Potatoes			
728	Viticulture, Small Fruit Crops & Tropical Fruit Crops			
729	Diagnostic Methods in Plant Pathology			
Total			25	30

8th Semester				
Code	Course Unit	Type	Hours /week	ECTS
1	Degree dissertation	C	5	10
2	Work Placement (24 weeks / 6 months)	C	-	20
Total			5	30

C= Compulsory course unit

E/C = Elective compulsory course unit

ECTS= European Credit Transfer System



School of Technological Applications

The School Of Technological Applications comprises four academic departments, that issue degrees, and the foundation department of Exact Sciences:

- ◇ **Department of Electrical Engineering**
- ◇ **Department of Mechanical Engineering**
- ◇ **Department of Civil Engineering
& Infrastructure**
- ◇ **Department of Informatics &
Telecommunications Technology**
- ◇ **Department of Exact Sciences**



Department of Electrical Engineering

The department was established in 1983 and its human resources consist of nineteen (19) permanent Faculty members, two (2) administrators at the secretariat, four (4) technicians and approximately thirty-six (36) Scientific and Laboratory Associates under contract.

Field of Study

Studies deal with the application of electrical engineering science and technology, putting emphasis on electrical energy systems and installations, automation, electronics and informatics systems

Career Opportunities

Graduates of the department have acquired the necessary scientific and technological knowledge and skills in order to pursue employment as Electrical Engineers from the Technological Higher Education in the following sectors:

- ◆ Preparation of technical – economical analysis and implementation analysis for electrical, electronic, IT, automation and communication systems.
- ◆ Technical support for electric power installations, electrical and electronic installations, as well as automation, IT and communication installations.
- ◆ Design, development and production of electrical,

electronic, IT, automation and communication systems products and services.

- ◆ Application of standards and regulations in the analysis and design of systems and products installations, as well as design and implementation of applied research and development programmes regarding production, integration and application techniques.



Contact Details

+30-2410-684303

secry-electr@teilar.gr

T.E.I. of Larissa, 411 10 Larissa, Greece

www.teilar.gr

1st Semester				
Code	Course Unit	Type	Hours /week	ECTS
121	Mathematics I	C	5	7
122	Physics	C	6	6
123	Fields & Electrical Circuits I	C	6	8
124	Materials Technology & Electric Chemistry	C	5	5
125	Technical Legislation & Occupational Safety	C	2	4
Total			24	30

2nd Semester				
Code	Course Unit	Type	Hours /week	ECTS
221	Mathematics II	C	5	8
222	Electronics I	C	7	8
223	Fields & Electrical Circuits II	C	6	7
224	Electric Measurements	C	4	5
225	Drawing - AutoCAD - 2D Drawing	C	3	2
Total			25	30

3rd Semester				
Code	Course Unit	Type	Hours /week	ECTS
321	Applied Mathematics III	C	4	6
322	Electrical Engines I	C	6	8
323	Electronics II	C	6	6
324	Computer Programming I	C	3	3
325	Technology, Society and Environment	c	2	4
326	AutoCAD - 3D Drawing	E/C	3	3
327	Mechanical Technology			
Total			24	30

4th Semester				
Code	Course Unit	Type	Hours /week	ECTS
421	Automatic Control Systems I	C	5	6
422	Digital Systems	C	6	8
423	Electrical Engines II	C	6	8
424	Computer Programming II	C	4	4
425	Electrical - Electronic Constructions I	C	2	2
426	Total Quality Management - Standardization	E/C	2	2
427	Construction Project Management - Business Communications			
Total			25	30

5th Semester				
Code	Course Unit	Type	Hours /week	ECTS
521	Automatic Control Systems II	C	4	6
522	High Power Electronics	C	4	5
523	Electrical Installation I - Electrical Design	C	5	7
524	Microcomputers	C	5	6
525	CAD & Electrical Circuits Analysis	C	2	2
526	Kinetic Engines	E/C	3	2
527	Vehicle Electrical Systems			
528	Foreign Language - terminology	C	2	2
Total			25	30

6th Semester				
Code	Course Unit	Type	Hours /week	ECTS
621	Electrical Installation II	C	7	8
622	Electrical Power Systems I	C	4	6
623	Electrical Distribution Systems	C	6	8
624	Economics	C	2	3
Specialisation in Energy Systems				
625	Electrical Applications	E/C	4	5
Specialisation in Industrial Automation				
625	Theory of Telecommunication Signals	E/C	4	5
Total			23	30

7th Semester				
Code	Course Unit	Type	Hours /week	ECTS
722	High Voltage Technology	C	5	5
723	Measurements Technology	C	4	5
Specialisation in Energy Systems				
721	Electrical Power Systems II	C	6	7
724	Electrical Installations Study & Design (with computer)	C	3	3
725	Industrial Electrical Design	C	3	3
726	Electrical Power Management - Alternative Sources of Energy	C	3	7
Total			24	30

7th Semester				
Code	Course Unit	Type	Hours /week	ECTS
Specialisation in Industrial Automation				
727	Industrial Electronics	C	4	5
728	PLC- Automation	C	6	7
729	Communication & Data Transmission Systems	C	4	5
730	Electrical - Electronic Constructions II	C	3	3
Total			26	30

C= Compulsory course unit
 E/C = Elective compulsory course unit
 ECTS= European Credit Transfer System

8th Semester				
Code	Course Unit	Type	Hours /week	ECTS
1	Degree Dissertation	C	4	20
2	Work Placement (24 weeks / 6 months)	C	-	10
Total			4	30

Department of Mechanical Engineering

The department has operated since 1983 and is staffed by sixteen (16) permanent Faculty members, two (2) administrators at the secretariat, three (3) technicians and approximately forty (40) Scientific and Laboratory Associates under contract.

Field of Study

Studies cover the field of mechanical engineering in terms of study, design, development, construction and operation of machines, appliances and production installations and systems, as well as management of materials and energy sources, on the basis of economy, respect for the environment and social tolerance.

Career Opportunities

Graduates have acquired all the necessary scientific and technological knowledge and practical skills in order to be able to seek employment in their field, either as freelancers or as executives in related companies, organisations and services. In particular, Mechanical Engineers:

- ◆ Apply up-to-date scientific and technological methodologies in the elaboration of engineering studies (heating, cooling, air-conditioning, plumbing, fire and sound protection, gas installations, elevators, etc) for building installations and supervise their implementation.
- ◆ Design, develop and supervise the operation of engineering installations and manufacturing systems.
- ◆ Study and apply safety regulations in engineering installations.
- ◆ Apply contemporary management methods in business and organisation administration.

- ◆ Apply up-to-date scientific and technological methodologies, and management practices in machines and appliances production, as well as certification of their quality and suitability.
- ◆ Undertake the social, environmental and legal obligations of production, manufacturing and processing companies as well as energy generating companies, on local, regional, national and world level.
- ◆ Apply up-to-date scientific and laboratory techniques in laboratories for end-product testing, process control and standardisation certification of safe operation, environmental protection and quality assurance.
- ◆ Organise, supervise, analyse and evaluate laboratory measurements and experiments in their field.
- ◆ Organise production using up-to-date monitoring, organisation, control and manufacturing methods such as CAM, CAD, CIM, etc.
- ◆ Develop and apply in practice up-to-date processing and modification methods, such as CNC, FMS and Robotics.
- ◆ Study and supervise the implementation of environmental protection measures regarding pollution created by urban waste, energy systems, engineering plants, and transportation.



Contact Details

+30-2410-684304

secry-engin@teilar.gr

T.E.I. of Larissa, 411 10 Larissa, Greece

www.teilar.gr

1st Semester				
Code	Course Unit	Type	Hours /week	ECTS
M131	Mathematics I	C	4	6
M132	Mechanics	C	4	5
M133	Physics	C	6	6
M134	Engineering Drawing I	C	4	3
M135	Physical Metallurgy	C	4	5
M136	Materials Technology	C	4	5
Total			26	30

2nd Semester				
Code	Course Unit	Type	Hours /week	ECTS
M231	Mathematics II	C	4	6
M232	Computer Programming	C	6	6
M233	Strength of Materials	C	6	6
M234	Engineering Drawing II	C	4	3
M235	Economical - Technical Analysis	C	2	4
M236	Basic Electrical Circuits	C	4	5
Total			26	30

3rd Semester				
Code	Course Unit	Type	Hours /week	ECTS
M331	Applied Mathematics	C	4	5
M332	Fluid Mechanics	C	5	7
M333	Machine Elements I	C	5	5
M334	Measurements Technology	C	5	5
M335	Thermodynamics	C	5	7
M336	English Technical Terminology	C	2	1
Total			26	30

4th Semester				
Code	Course Unit	Type	Hours /week	ECTS
M431	Dynamics - Vibrations	C	3	5
M432	Electrical Machines	C	4	5
M433	Machine Elements II	C	5	6
M434	Mechanical Workshop	C	8	7
M435	Internal Combustion Engines I	C	6	7
Total			26	30

5th Semester				
Code	Course Unit	Type	Hours /week	ECTS
M531	Industrial Management	C	3	5
M532	Technical Legislation	c	2	3
M533	Industrial Automation	C	5	7
M534	CAD Laboratory	C	6	4
M535	Tribology and Metal Forming	C	5	6
M536	Antipollution Technology	C	3	5
Total			24	30

6th Semester				
Code	Course Unit	Type	Hours /week	ECTS
M631	Occupational Safety & Environmental Protection	C	3	5
M632	Numerical Analysis & Finite Elements	C	4	5
Specialisation in Manufacturing				
M633	Mechanical Installations in Buildings	C	6	7
M634	Machine Tools	C	6	7
M635	Mechanical Constructions Planning	C	5	6
Specialisation in Energy Systems				
M636	Heat Transfer	C	6	7
M637	Heating - Refrigeration & Air-Conditioning I	C	5	6
M638	Internal Combustion Engines II	C	6	7
Total			24	30

7th Semester				
Code	Course Unit	Type	Hours /week	ECTS
M731	Graduate Seminar	C	3	2
Specialisation in Manufacturing				
M732	Elevation and Conveying Machines	C	5	7
M733	Production Management	C	6	7
M734	Quality Assurance & Control	C	6	7
M735	Metal Structures	C	6	7
Specialisation in Energy Systems				
M736	Renewable Energy Sources	C	6	7
M737	Heating - Refrigeration & Air-Conditioning II	C	5	7
M738	Steam Turbines & Boilers	C	6	7
M739	Pumps & Turbines	C	6	7
Total			26	30

8th Semester				
Code	Course Unit	Type	Hours /week	ECTS
1	Work Placement (24 weeks / 6 months)	C	-	10
2	Degree Dissertation	C	4	20
Total			4	30

C= Compulsory course unit
 E/C = Elective compulsory course unit
 ECTS= European Credit Transfer System

Department of Civil Engineering & Infrastructure

The department was established in 1985 and presently comprises eleven (11) permanent Faculty members, three (3) administrators at the secretariat, two (2) technicians, a (1) laboratory technician and approximately twenty (20) Scientific and Laboratory Associates under contract.

Field of Study

The course provides a sound academic training for the application of technical disciplines in the design, planning, supervision and construction of infrastructure projects.

Career Opportunities

Graduates are called Technological Education Engineers for Infrastructure Projects and have acquired the necessary scientific, technological and technical knowledge and skills in order to work as individual professionals or as part of teams in both the private and public sector, carrying out study, research and technology applications in infrastructure projects and operations within their field of study, such as:

- ◆ Supervision and construction of transportation, hydraulics, geotechnical and other technical projects.
- ◆ Project design and project monitoring, as executives in public services or private offices.

- ◆ Preparation and supervision of private and public infrastructure project studies as freelancers.
- ◆ Expert opinion analysis, estimate evaluation, and quality control of materials and operations.
- ◆ Organisation of technical projects and laboratories as they have the skills to analyse laboratory results regarding strength of materials, hydraulic projects, waste cleaning, environmental protection, marine projects, etc.
- ◆ Application of up-to-date computer technology to the above mentioned areas.

They are also employed as executives in enterprises and services.



Contact Details

+30-2410-684307, +30-2410-684527, +30-2410-684306 (fax)

secry-civil@teilar.gr

T.E.I. of Larissa, 411 10 Larissa, Greece

www.teilar.gr

1st Semester				
Code	Course Unit	Type	Hours /week	ECTS
109	Mathematics-I	C	5	5.5
110	Technical Physics-I	C	6	6.5
111	Chemical Technology of Structural Materials	C	4	4.5
112	Engineering Drawing &Design	C	4	4.0
113	Geotechnics	C	4	4.5
114	Descriptive Geometry	C	4	5.0
Total			27	30

2nd Semester				
Code	Course Unit	Type	Hours /week	ECTS
208	Mathematics-II	C	4	4.5
209	Technical Physics-II	C	5	5.5
210	Statics	C	5	5.5
211	Construction Material Technology	C	4	4.5
212	Topography	C	6	7.0
213	Computer Programming-I	C	3	3.0
Total			27	30

3rd Semester				
Code	Course Unit	Type	Hours /week	ECTS
308	Applied Mathematics	C	4	4.5
309	Hydraulics-I	C	6	7.0
310	Computer Programming-II	C	3	3.0
311	Special Issues of Topography	C	6	7.0
312	Durability of Material	C	6	6.5
313	Dynamics	C	2	2.0
Total			27	30

4th Semester				
Code	Course Unit	Type	Hours /week	ECTS
410	Asphaltic Projects	C	3	3.5
411	Hydraulics-II	C	6	7.0
412	Transportation Infrastructure I	C	4	5.5
413	Pedology-I	C	6	7.0
414	Foreign Language - Terminology	C	2	3.0
415	Technical Legislation	E/C	3	4.0
418	Occupational Health & Safety			
Total			24	30

5th Semester				
Code	Course Unit	Type	Hours /week	ECTS
508	Reinforced Concrete	C	5	6.0
509	Transportation Infrastructure II	C	5	6.0
510	Construction Estimations	C	4	5.0
511	Irrigation and Drainage	C	4	5.0
512	Harbor Design	E/C	3	4.0
513	Basic Engines			
514	Project Financial Management	C	3	4.0
Total			24	30

6th Semester				
Code	Course Unit	Type	Hours /week	ECTS
610	Worksite Management	C	5	6.0
611	Airport Design	E/C	5	6.0
612	Soil Mechanics - II (Structure Foundations)			
613	Hydrology	C	4	5.0
614	Construction of Tunnels - Rock Mechanics	C	6	7.0
615	Sewage Treatment & Sanitation Engineering	C	5	6.0
Total			25	30

7th Semester				
Code	Course Unit	Type	Hours /week	ECTS
708	Fluid Dynamics & Flood Defence	C	7	8.0
709	Concrete Applications in Construction Projects	E/C	4	5.5
710	Traffic Engineering - Railways			
711	Highway Construction Projects	C	6	7.0
712	Water Supply	C	4	5.5
713	Principles of Environmental Systems	C	3	4.0
Total			24	30

8th Semester				
Code	Course Unit	Type	Hours /week	ECTS
1	Degree Dissertation	C	4	20
2	Work Placement (6 months / 24 weeks)	C	-	10
Total			4	30

C= Compulsory course unit

E/C = Elective compulsory course unit

ECTS= European Credit Transfer System

Department of Informatics & Telecommunications Technology

The department was founded in 1999 with the Presidential Decree 200/1999 and instruction started in the winter semester of the academic year 1999-2000. The human resources of the department comprise twelve (12) permanent members of Faculty, two (2) administrators at the secretariat and approximately seventy (70) Scientific and Laboratory Associates under contract.

The department delivers a postgraduate course leading to an M.Sc in Computer Science in collaboration with Staffordshire University, in the United Kingdom.

Field of Study

Studies focus on the science and applications of information technology, and organisation and administration of information network and telecommunications.

Career Opportunities

The graduates of the department have the theoretical and technological knowledge and skills required for a professional career in the competitive field of computing and are qualified to:

- ◆ pursue postgraduate studies in Greece or abroad,

- ◆ follow the rapid theoretical and technological advances in their field of study, based on their background education,
- ◆ to work within their field of study either as freelancers or as employees and executives in public and / or private companies and organisations.

In particular, Informatics & Telecommunications Technology graduates work as:

- ◆ Software Engineers in public or private office automation services and / or in companies producing and marketing software applications.
- ◆ Systems Designers, Analysts and Administrators in Network and Telecommunication Services.



Contact Details

+30-2410-684387

secry-cs@teilar.gr

T.E.I. of Larissa, 411 10 Larissa, Greece

www.cs.teilar.gr

1st Semester				
Code	Course Unit	Type	Hours /week	ECTS
120	Mathematical Analysis I	C	5	5
121	Physics I	C	6	5
122	Programming I	C	5	5
123	Principles of Telecommunications	C	4	5
124	Electronics	C	4	5
125	Discrete Systems	C	4	5
Total			28	30

2nd Semester				
Code	Course Unit	Type	Hours /week	ECTS
220	Mathematical Analysis II	C	5	5
221	Physical Principles of Telecommunication Technologies	C	4	5
223	Computer Architecture I	C	4	5
224	Electronic Telecommunications	C	4	5
225	Numerical Analysis	C	4	5
226	Programming II	C	4	5
Total			25	30

3rd Semester				
Code	Course Unit	Type	Hours /week	ECTS
320	Databases I	C	4	5
321	Data Structures and Algorithms	C	4	5
322	Probabilities Theory & Statistics	C	4	5
323	Networks I	C	4	5
324	Operating Systems I	C	4	5
325	Linear Algebra Applications in Computer Science & Telecommunications	C	4	5
Total			24	30

4th Semester				
Code	Course Unit	Type	Hours /week	ECTS
421	Algorithms & Complexity	C	4	5
422	Computer Architecture II	C	4	5
423	Foundations of Computation	E/C	4	5
424	Principles of Programming Languages			
425	Information Systems Analysis & Design	C	4	5
426	Systems Theory - Automatic Control Systems	C	4	5
427	Networks II	C	4	5
Total			24	30

5th Semester				
Code	Course Unit	Type	Hours /week	ECTS
920	Business Finance	C	3	5
Specialisation in Computer Science				
531C	Programming III	C	5	7
532C	Software Technology	C	5	7
533C	Databases II	C	4	6
534C	Logic Programming	E/C	4	5
535C	File Organisation & Management			
Specialisation in Telecommunications & Networking				
541T	Signal Processing	C	5	7
542T	Telecommunication Systems I	C	5	7
543T	Optical Communications	C	4	6
544T	Mobile Communications	E/C	4	5
545T	Analysis, Design & Implementation of Networks			
Total			21	30

6th Semester				
Code	Course Unit	Type	Hours /week	ECTS
921	The Regulatory Environment in Telecommunications	C	3	5
930	Operations Research	E/C	4	5
931	Information Technology Project Management			
Specialisation in Computer Science				
631C	Artificial Intelligence	E/C 4 out of 6	4	5
632C	Advanced Programming Applications		4	5
633C	Multimedia		4	5
634C	Operating Systems II		4	5
655	Network Programming		4	5
656	Information Systems Security		4	5
Specialisation in Telecommunications & Networking				
641T	Data Communications	E/C 4 out of 6	4	5
642T	Telecommunications Systems II		4	5
643T	Special topics in Optical Communications		4	5
644T	Wireless Communications		4	5
655	Network Programming		4	5
656	Information Systems Security		4	5
Total			23	30

C= Compulsory course unit
 E/C = Elective compulsory course unit
 ECTS= European Credit Transfer System

7th Semester				
Code	Course Unit	Type	Hours /week	ECTS
922	Information Systems Marketing	E/C	4	3
923	Computer Science Didactics			
Specialisation in Computer Science				
731C	Seminar in Computer Science Advanced Topics	C	4	6
732C	Special Topics in Databases	E/C	5	7
733C	E-Commerce	3	5	7
734C	Internet Programming	out	5	7
735C	Grid Computing	of	5	7
736C	Compilers	6	5	7
757	Distributed Systems		5	7
Specialisation in Telecommunications & Networking				
741T	Seminar in Networking and Telecommunications Advanced Topics	C	4	6
742T	Satellite Communications	E/Y 3 out of 6	5	7
743T	CDMA		5	7
744T	Internetworking & Automation		5	7
745T	Broadband Networks		5	7
746T	Network Performance		5	7
757	Distributed Systems		5	7
	Total			23

8th Semester				
Code	Course Unit	Type	Hours /week	ECTS
800	Work placement (24 weeks / 6 months)	C	-	10
801	Degree Dissertation	C	-	20
	Total		-	30

C= Compulsory course unit

E/C = Elective compulsory course unit

ECTS= European Credit Transfer System

Department of Exact Sciences

Mission

The department does not issue degrees and its mission is to support the teaching of foundation course units in all T.E.I. academic departments. These foundation course units fall into two broad sectors: Physics & Mathematics, and Applied Chemistry and Materials Technology. They are the following:

1. Mathematics
2. Mathematical Analysis
3. Applied Mathematics
4. Numerical Analysis
5. Statistics
6. Physics
7. Dynamics
8. Chemistry
9. General Chemistry
10. Organic Chemistry
11. Quantitative Chemistry
12. Electrical Chemistry
13. Chemical Technology
14. (mechanical, electrical and construction) Materials Technology.

The department delivers teaching in the following academic departments:

- ◆ Electrical Engineering
- ◆ Mechanical Engineering

- ◆ Civil Engineering & Infrastructure
- ◆ Informatics & Telecommunications Technology
- ◆ Food Technology (Karditsa Branch)
- ◆ Medical Laboratories

It also provides teaching services, at a lesser degree, to the following academic departments:

- ◆ Agricultural Machinery & Irrigation
- ◆ Nursing
- ◆ Building Renovation & Restoration (Trikala Branch)
- ◆ Forestry & Environmental Protection (Karditsa Branch)
- ◆ Wood & Furniture Design & Technology (Karditsa Branch)

The department is staffed by thirteen (13) permanent members of Faculty, four (4) technicians and one (1) administrator at the secretariat.



Contact us at

+30-2410-684310, +30-2410-613249 (fax)

secry-gd@teilar.gr

T.E.I. of Larissa, 411 10 Larissa, Greece

www.teilar.gr



KARDITSA BRANCH



KARDITSA - the city and the prefecture

Karditsa is the capital of the prefecture and is situated not only in the centre of the prefecture but also in the heart of Greece, a fact that might be related to the name of the city (as kardia in Greek means heart). The city was founded in the beginning of 17th century and it is the first city in Europe that gained its freedom from the German rule in 1943. It is a pleasant city to live in, with pedestrian walkways that connect the Central Square with Pafsilypo, a wonderful green park with. There are numerous religious monuments in the city, a remarkable Municipal Market building which belongs in the "Jugendstil" architecture of beginning of the previous century, a modern cinema theatre, a Municipal Library, five conservatoires, Contemporary Municipal Gallery with exhibitions of well-known artists from Karditsa, Folklore Museum, choirs, dancing groups and scientific and cultural societies, etc. Just 3 km southwest of the city lies Papatatza or "thousand Trees", an impressive recreation part which is the perfect place for cool summer strolls.

Karditsa is a modern city and its infrastructure includes a lot of stores that provide for the needs of the citizens in all kinds of products, clothes, machines, etc. Apart from the three departments of T.E.I. of Larissa - Karditsa Branch, there is also the Veterinary School of the University of Thessaly.

Karditsa Prefecture occupies the south-western part of the region of Thessaly. It is the place of origin of many historic personalities such as Georgios Karaiskakis, St Seraphim, and impresses visitors with the differences in the environment and the natural beauty that is created by the combination of Agrafa mountain range and the thessalian plain. The



mountainous, semi-mountainous and plain areas cover 42%, 9%, and 49% of the prefecture, respectively. The mountains are covered in fir, birch and oak woods, bushes and pastures, and are inhabited by a lots of animal species. One of the mountain range is particularly impressive as it looks like a "sleeping lady".

Scattered all over the prefecture are countless monasteries, the most famous of which are the Monasteries of Petra, of Korona and of Panagia Pelekiti. On the edge of Agrafa range stands Fanari Castle which is an excellent Byzantine monument built in 13th century. Towards the west in



Argithea, stony mountains dominate the area and the stone bridges, of one or more arches, present an impressive peculiarity on the landscape. In the south, Redina is picturesque village with historical churches that exhibit traditional architecture styles and Smokovo Bathes are famous for its hot spa.

The prefecture population comes up to approximately 130,000 inhabitants, whose main occupation is agriculture and the main crop is cotton. Viniculture is advanced too, while animal raising is concentrated mostly in the mountains.

The most important technical work in the area is Plastiras artificial lake which is the implementation of an idea that Plastiras had in 1928, and was constructed on Megdova, the tributary of Aheloos, in 1961. The lake is incredibly beautiful, surrounded by thick woods that reach the waters and many torrents. Fir, birch and chestnut forests cover the banks of the lake while green pastures match the blue colour of the waters. The lake is spread over an area of about 6,300 acres and the water is used for the Karditsa water supply system, for the irrigation of part of the plain and it provides energy to the electrical energy plant that generates 40 MWH/week.

In the last twenty years tourism in the area has been developed rapidly since the lake, which has become an integral part of the environment, and the surrounding slopes present incredible natural beauty that visitors enjoy. The tourism infrastructure in the area has advanced considerably, too, and satisfies the needs of the visitors offering a variety of services and activities. Travellers can take up trekking,

and mountain biking in the well-trailed network of paths and bike routes. They can also visit monasteries in the area and the Neohori botanical garden. There are traditional hostels in the mountains, hotels in Karditsa and many music halls and restaurants that serve the traditional dishes prepared by the people in the plain.

Special thanks to Karditsa Prefecture for providing the information on the city and the region.

www.karditsa-city.gr

www.karditsa.gr





KARDITSA BRANCH

Karditsa Branch comprises three academic departments:

- ◆ **Department of Forestry & Environmental Management**
- ◆ **Department of Wood & Furniture Design & Technology**
- ◆ **Department of Food Technology**

and provides students with the following academic services and facilities:

- ◆ Student Welfare
- ◆ Library
- ◆ Career Office

Student Welfare and Library

Students at Karditsa Branch are entitled to all the welfare serviced provided by the T.E.I. of Larissa:

They receive free **Teaching Material** such as textbooks and teaching notes. They have free access to the **IT studio** where all PCs are connected to the T.E.I. network, providing access to e-mail and the internet, as well as to the library catalogues. Free meals (breakfast, lunch and dinner) are provided at the **Student Restaurant** to students that have low income. Upon registration students are issued a **Reduced Fare Card** which entitles them to reduced ticket fares in all means of public transportation. They are also entitled to free medical and **health care** under the Greek National Health System, unless otherwise insured, for as long as they study at the T.E.I. up to twelve semesters.

Student grants (□ 1000 per year) are available to students who are not entitled to free accommodation, in order to cover their living expenses, on provision they respond successfully to their academic obligations.

Free Accommodation is provided at the Halls of Residence to a number of students that have low income. The two Halls of Residence belong to Karditsa Branch and can provide accommodation to 96 students in twin-bedded rooms, including rooms with special facilities for students with disabilities. There are also indoor and outdoor recreation facilities. Apart from meeting housing needs, T.E.I. accommodation also provides students with the necessary facilities to help them get involved in various sports, artistic, and recreational activities, in order to socialize, meet people and exchange ideas throughout their studies.

The Karditsa Branch **Library** is situated on the ground floor in the Halls of Residence and spreads in an area of 150 m².

The library is stocked with resources specifically related to the fields of study taught at the Branch departments, in order to serve the educational and research needs of the members. There is special emphasis on physical and social disciplines, as well as technological sciences and applications. The library collections provide a wealth of materials on forests, forestry, ecology, natural environment, woodland products, wood and furniture processing and technology, topography, physics, chemistry, mathematics, statistics, engineering, nutrition, economics, social sciences, etc. There are also limited collections of books on religion, fine arts, philosophy and literature.

Services

The library automation system is fully supported by Horizon v.7.3, which provides free access to Online Public Access Catalogue (OPAC).

WEB

The library web page provides all the necessary information regarding the operation and services offered by the Central Library, the Karditsa and Trikala Branch Libraries and the Multiple-copies Library.

Web PAC

Library members have access to Web PAC which enables them to start a simple or complex search of items by defining an element, such as book author, title, topic, ISBN, etc., and reserve them online.

Student Welfare

+30-24410-72042, +30-24410-72575 (fax)

Student Restaurant

+30-24410-71752 (ext. 112)

Karditsa Branch, T.E.I. of Larissa, Mavromihalis Street End,
43100 Karditsa, Greece

Contact Details

+30-24410-80031, +30-24410-80031(fax)

Libkar@teilar.gr

Karditsa Branch, T.E.I. of Larissa, Mavromihalis Street End,
43100 Karditsa, Greece
<http://library.teilar.gr>

Karditsa Branch - Career Office

The **Karditsa Branch Career Office** was established in 2005 and:

- ◆ Aims at assisting students and graduates in career and employment issues.
- ◆ Focuses on relating the Branch with productive and developmental agents in order to promote the graduates in the labour market.
- ◆ Co-operates with productive and developmental agents in order to assist them in recruiting scientific personnel, operating as a permanent communication link between them and higher education and research.
- ◆ Keeps data bases with graduates' CVs and enterprises' profiles as prospective employers.
- ◆ Conducts studies and draws useful conclusions regarding graduates and their careers, as well enterprises and the tendencies in the labour market today and in the future.
- ◆ Holds one-day events and meetings on career and prospects issues.
- ◆ Publishes information material for the promotion of the office and Karditsa Branch departments.

Services

- ◆ *Career Counselling*: addressing both students and graduates and covering topics such as CVs, covering letters, completing application forms and interview skills.
- ◆ *Student Advice*: addressing students and dealing with topics such as dissertation, work placement and mobility.
- ◆ *Information on postgraduate studies*: addressing graduates and referring to postgraduate courses, scholarships and grants, seminars, life-long learning programmes, etc.
- ◆ *Information on accreditation*: addressing graduates and dealing with accreditation issues, professional bodies and

unions.

- ◆ *Vacancies*: addressing graduates and presenting companies that wish to recruit Branch graduates and advertise vacant positions on the Career Office web site.

Location, Personnel & Opening hours

The Office provides for the three academic departments at Karditsa Branch and the academic department at Trikala Branch.

It is located at the Department of Forestry & Environment Management, on the first floor. It is open every day at 9:00 - 14:00 and 16:00 - 19:00.

It is organized, coordinated and supervised by the Scientific Project Manager and it is staffed by two counselors.

The Karditsa Branch Career Office participates in Operational Programme for Education & Initial Training II and is financed by the European Social Fund and national funds.



Contact Details

+30-24410-80030, +30-24410-80811(fax)

career.kard@teilar.gr

Karditsa Branch, T.E.I. of Larissa, Mavromihalis Street End, 43100 Karditsa, Greece

<http://career.kard.teilar.gr>

Scientific Project Manager

+30-24410-80064, +30-24410-80065(fax)

vergos@teilar.gr

Department of Forestry & Environmental Management

The department of Forestry in Karditsa was founded in 1985 and merged with the equivalent one in Larissa the same year. Instruction started in the academic year 1985-6 at the Karditsa Branch. Since academic year 2005-06 it has modified the course, changed its title and operates as Department of Forestry and Environmental Management. The human resources include eleven (11) permanent members of Faculty, four (4) technicians, three (3) administrators at the Secretariat, and approximately forty-six (46) Scientific and Laboratory Associates.

Field of Study

Studies cover the application of technical, biological and financial disciplines in the sustainable production and management, and protection of land natural ecosystems, as well as in the preservation, restoration and protection of the natural environment as a whole.

Career Opportunities

Foresters and Environmental Managers are equipped with scientific and technological knowledge and eligible to work in both the private and public sector, local authorities organisations, either as autonomous professionals or in collaboration with other scientists and take part in the study, research and application of technology on all fields of Forestry, i.e. management, exploitation, protection, and development of forests, and particularly in:

- ◆ management, exploitation, protection, and development of forest lands.
- ◆ management and development of wild fauna reservations, zoological parks and hunting management.
- ◆ management, exploitation, protection, and development of mountainous and semi-mountainous pastures and plain area.
- ◆ activities related to the protection, development and conservation of the natural environment balance.
- ◆ pedology and land reclamation activities related to forests.
- ◆ establishing and operating forest plant nurseries.
- ◆ forest industries producing, developing and processing forest products.
- ◆ production, standardisation, packaging and promotion of pesticides, fertilisers and forest tools and machines.
- ◆ preparation, supervision and participation in studies in various fields such as topography, forestry, management and protection of land natural ecosystems, management and protection of wild fauna, establishment and improvement of wood processing industries, etc.
- ◆ expertise studies.
- ◆ state and private education
- ◆ applied research teams.



Contact Details

+30-24410-64701, +30-24410-71752 (ext. 102), +30-24410-71753 (fax)

secry-forest@teilar.gr

Karditsa Branch, T.E.I. of Larissa, Mavromihalis Street End, 43100 Karditsa, Greece

www.teilar.gr

1st Semester				
Code	Course Unit	Type	Hours /week	ECTS
111	Introduction to Computers	C	6	6.5
112	Meteorology - Climatology	C	4	5.0
113	Plant Morphology & Physiology	C	5	6.0
114	Forest Soil Science	C	5	6.0
115	Applied Mathematics	c	5	6.5
Total			25	30

2nd Semester				
Code	Course Unit	Type	Hours /week	ECTS
211	Silvicultural Botany (gymnosperm)	C	5	5.0
212	Biometry	C	4	5.0
213	Topography	c	5	5.0
214	Biology of Wild Fauna	C	4	5.0
215	Mechanics	c	4	5.0
216	Ecology - Environment	C	4	5.0
Total			26	30

3rd Semester				
Code	Course Unit	Type	Hours /week	ECTS
311	Silvicultural Botany (angiosperm)	C	5	5.0
312	Pedology	C	4	5.0
313	Timber Marketing & Utilisation	C	4	5.0
314	Arborometry	C	4	5.0
315	Surveying - Mapping	C	5	5.0
316	Natural Environment Tele-surveying	C	4	5.0
Total			26	30

4th Semester				
Code	Course Unit	Type	Hours /week	ECTS
413	Woodland Ecology	C	4	5.0
414	Hydrology - River Basin Protection	C	4	5.0
415	Forest Economics & Valuation	C	5	5.0
416	IT Applications in Forestry	C	5	5.0
417	Forest Protection	C	4	5.0
418	Forest Wood Technology	C	4	5.0
Total			26	30

5th Semester				
Code	Course Unit	Type	Hours /week	ECTS
511	Applied Silviculture	C	5	5.5
512	Applied Forest Infrastructure	C	5	5.5
513	English Terminology	C	5	5.0
514	Forest Fire Management	C	4	5.0
515	Urban Forestry	E/C	4	5.0
516	Forest Genetics			
517	Elements of Environmental Mechanics	E/C	3	4.0
518	Forest Recreation & Ecotourism			
Total			26	30

6th Semester				
Code	Course Unit	Type	Hours /week	ECTS
612	Woodland Management	C	6	6.5
613	Mountain Waters Management	C	5	6.5
614	Grassland Management	C	5	5.5
615	Forest Project Design & Construction	E/C	5	6.0
616	Geographic Information Systems & Natural Resource Mapping			
617	Landscape Architecture - Management & Conservation	E/C	5	5.5
618	Protected Natural Resources-Reserves			
Total			26	30

7th Semester				
Code	Course Unit	Type	Hours /week	ECTS
711	Forest Policy	C	4	5.0
712	Wildlife & Protected Natural Resources Management	C	5	5.5
713	Graduate Seminar	C	4	4.0
714	Professional Ethics	C	3	5.0
715	Environmental Economics	E/C	5	5.5
716	Forest & Environmental Law			
717	Qualitative & Quantitative Analysis of Ecosystems & Environment	E/C	4	5.0
719	Forest Inventory			
Total			26	30

8th Semester				
Code	Course Unit	Type	Hours /week	ECTS
1	Degree Dissertation	C	4	20
2	Work Placement (24 weeks / 6 months)	C	-	10
Total			4	30

C= Compulsory course unit

E/C = Elective compulsory course unit

ECTS= European Credit Transfer System

Department of Wood & Furniture Design & Technology

The department was established with the Presidential Enactment 200/1999, and instruction started in the winter semester of the academic year 1999-2000. Presently, the staff consists of nine (9) permanent members of Faculty, one (1) technician, two (2) administrators at the Secretariat, and approximately thirty-five (35) Scientific and Laboratory Associates and five (5) Laboratorial-teaching associates under contract.

Field of Study

Studies cover the scientific fields of wood science and technology, furniture production technology and furniture design, carried out in compliance with the social rules and respect to the environment.

Mission of the department is

- a) to promote the transmission and advancement of knowledge in the field of wood science and technology, furniture production technology and furniture design,
- b) to provide students with a high level of technological training, knowledge and skills in order to ensure their scientific and professional development and future career,
- c) to develop know-how and innovations by applying scientific and technological knowledge, in order to promote the growth and progress of the wood and furniture industry in our country,
- d) to educate new Wood & Furniture Technologists and Designers of the highest quality level.

Career Opportunities

The department graduates can work in the wood-furniture sector as Wood Technologists, Furniture Technologists and Designers, and particularly in the following areas:

- ◆ Designing furniture and systems of furniture and creating prototype designing proposals,
- ◆ Application of technological methods on furniture production,
- ◆ Production of wood and wooden products (such as particleboards, fibreboards, plywood, pulp paper and paper, frames, roofs, floors, greenhouses, etc)
- ◆ Evaluation and cost evaluation of wooden products, wooden structures and furniture,
- ◆ Furnishing and decoration from wood,
- ◆ Examining the observation of technical specifications and the application of quality assurance and control systems in wood and furniture products.
- ◆ Carrying out feasibility studies for the establishment, organisation, management, operation and recruitment of wood processing and wood trading businesses.
- ◆ Employment in the service of occupational health and safety,
- ◆ Employment in public and private education, according to relevant legislation.



Contact Details

+30-24410-64702, +30-24410-28299 (fax)

secry-wood@teilar.gr

Karditsa Branch, T.E.I. of Larissa, Mavromihalis Street End, 43100 Karditsa, Greece

<http://www.wfdt.teilar.gr>

1st Semester				
Code	Course Unit	Type	Hours /week	ECTS
1	Mathematics	C	4	5
2	Technical Drawing I	C	4	4
3	History of Fine Arts	C	4	6
4	Introduction to Wood Structure	C	5	5
5	Machine Components	C	3	4
6	Free-hand Drawing	C	6	6
Total			26	30

2nd Semester				
Code	Course Unit	Type	Hours /week	ECTS
1	Furniture Styles	C	4	6
2	Technical Drawing II	C	4	4
3	Introduction to Wood Properties	C	5	5
4	Wood Technology I	C	5	5
5	Information Technology I	C	5	5
6	Non-Wood Furniture Materials	C	4	5
Total			27	30

3rd Semester				
Code	Course Unit	Type	Hours /week	ECTS
1	Business Administration	C	3	5
2	Technical & Structural Furniture Drawing I	C	5	5
3	Wood Technology II	C	5	5
4	Wood Mechanical Processing I	C	4	5
5	Furniture Production Technology I	C	4	5
6	Information Technology II	C	5	5
Total			26	30

4th Semester				
Code	Course Unit	Type	Hours /week	ECTS
1	Wood Technology III	C	4	5
2	Wood Mechanical Processing II	C	4	5
3	Furniture Production Technology II	C	6	6
4	Technical & Structural Furniture Drawing II	C	6	6
5	English (Technical Terminology)	C	3	3
6	Computer Aided Design For Furniture Production I	C	4	5
Total			27	30

5th Semester				
Code	Course Unit	Type	Hours /week	ECTS
1	Furniture Production Technology III	C	4	5
2	Quality Control of Raw Materials	C	4	5
3	Furniture Industrial Design I	C	4	5
4	Computer Aided Design For Furniture Production II	C	5	5
5	Wood Mechanical Processing III	E/C 2 out of 5	4	5
6	Programming of CNC Machines		4	5
7	Production Technology for Furniture Metallic Elements		4	5
8	Furniture Creative Design		4	5
9	Interior Decoration		4	5
Total			25	30

6th Semester				
Code	Course Unit	Type	Hours /week	ECTS
1	Furniture Production Technology IV	C	6	7
2	Graduate Seminar	C	3	5
3	Furniture/Wood Plant Layout & Design	C	4	6
4	Furniture Industrial Design II	E/C 2 out of 5	5	6
5	Computer Aided Design For Furniture Production III		5	6
6	Contemporary Furniture Design Programs I		5	6
7	Quality Control Of Furniture		5	6
8	Surface Treatment and Finishing		5	6
Total			23	30

7th Semester				
Code	Course Unit	Type	Hours /week	ECTS
1	Technical Legislation & Occupational Safety	C	5	7
2	Wood Chemical Technology	C	5	7
3	Furniture & Wood Products Marketing	E/C 3 out of 6	5	6
4	Contemporary Furniture Design Programs II		5	5
5	Furniture Industrial Design III		5	5
6	Furniture Repair, Maintenance & Restoration		5	5
7	Wood Constructions		5	5
8	Principles of Economics		5	6
Total			25	30

8th Semester				
Code	Course Unit	Type	Hours /week	ECTS
1	Degree Dissertation	C	4	15
2	Work Placement (24 weeks / 6 months)	C	-	15
Total			4	30

C= Compulsory course unit

E/C = Elective compulsory course unit

ECTS= European Credit Transfer System

Department of Food Technology

The department was established in 2004 (Act 189A/2004) within the Operational Programme for Education & Initial Training II and was financed by the 3rd Community Support Framework. Instruction started in the winter semester of academic year 2005-2006. The human resources comprise one (1) permanent Professor, one (1) technician, two (2) administrators working at the secretariat, a librarian and approximately forty-five (45) Scientific and Laboratorial Associates under contract.

Field of Study

Studies cover a broad area of applications in food discipline and technology, offering specialised scientific and technical knowledge that responds to the labour market demand.

Career Opportunities

The graduates of the department can work either independently as self-employed or in collaboration with other scientists, in research and application of Food Technology on modern and specialised sectors of food science and food processing, preservation and quality control, and exploitation of by-products of food industries. The graduates can also work as executives in the private and public sector or as freelancers in the following fields:

- ◆ Production and qualitative control in food industries as well as in food control and distribution services.

- ◆ Food industry equipment and food additives marketing and distribution.
- ◆ Establishment and operation of independent food analysis laboratories.
- ◆ Carrying out economical-technical analysis on the establishment or expansion of food industries.
- ◆ Participation in studies and supervision of food industry constructions and/or expansions
- ◆ Activities related to their professional expertise on modern and specialised sectors of food science and technology.
- ◆ Consultancy in food legislation courts or other courts and in food authorities for the certification of food quality and safety.
- ◆ Instruction in education.
- ◆ Research in related fields, as members of research teams, at hospitals, research centres and bodies.

They are eligible for promotion in food and food service enterprises and take up executive positions according to legislation in force.



Contact Details

+30-24410-41082, +30-24410-41080 (fax)

secry-food@teilar.gr

Karditsa Branch, T.E.I. of Larissa, Temponera Street End, 43100 Karditsa, Greece

<http://www.food.teilar.gr>

1st Semester				
Code	Course Unit	Type	Hours /week	ECTS
101	Mathematics	C	4	4.8
102	Chemistry	C	6	7.2
103	Physics	C	4	4.8
104	Biology	C	4	4.8
105	Computer Science	C	4	4.8
106	Food Science & Technology Principles	C	2	3.6
Total			24	30

2nd Semester				
Code	Course Unit	Type	Hours /week	ECTS
201	Quantitative Chemistry Analysis	C	6	5.8
202	Organic Chemistry	C	5	5.3
203	Applied Mathematics & Statistics	C	4	4.8
204	General Microbiology	C	2	2.9
205	Food Engineering I	C	4	3.9
206	Introduction to Economics	C	2	2.9
207	English Terminology	C	3	4.4
Total			26	30

3rd Semester				
Code	Course Unit	Type	Hours /week	ECTS
301	Food Chemistry	C	7	8.0
302	Food Engineering II	C	4	4.0
303	Food Biochemistry	C	2	3.0
304	Food Analysis I	C	5	6.0
305	Food Microbiology I	C	6	6.0
306	Food Physical Chemistry	C	2	3.0
Total			26	30

4th Semester				
Code	Course Unit	Type	Hours /week	ECTS
401	Food Analysis II	C	5	6.0
402	Food Processing I	C	5	6.2
403	Food Biotechnology & Industrial Microbiology	C	6	6.8
404	Food Microbiology II	C	5	5.0
405	Business Administration	C	2	3.0
406	Viticulture & Vine Products	E/C	2	3.0
Total			25	30

5th Semester				
Code	Course Unit	Type	Hours /week	ECTS
501	Food Preservation (Food Processing II)	C	5	7.0
502	Food & Drinks Packaging	C	5	7.0
503	Milk & Dairy Products Technology & Quality Control	C	7	8.0
	Elective Compulsory Course Unit	C	7	8.0
Total			24	30

6th Semester				
Code	Course Unit	Type	Hours /week	ECTS
601	Sensory Evaluation of Food & Drinks	C	5	5.5
602	Food Safety, Quality Assurance & Food Law	C	3	5.5
603	Human Nutrition	C	3	3.0
	Elective Compulsory Course Unit	C	7	8.0
	Elective Compulsory Course Unit	C	7	8.0
Total			25	30

7th Semester				
Code	Course Unit	Type	Hours /week	ECTS
701	New Products Research & Development	C	7	8.0
702	Professional Ethics	C	2	3.0
703	Food Industry By-products Processing & Utilization	C	5	5.0
704	Food Toxicology	C	4	6.0
	Elective Compulsory Course Unit	C	7	8.0
Total			25	30

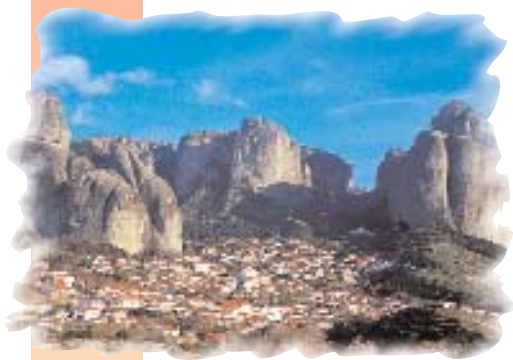
8th Semester				
Code	Course Unit	Type	Hours /week	ECTS
1	Degree dissertation	C	-	20
2	Work placement (24 week / 6 months)	C	-	10
Total			-	30

Elective Compulsory Course Units				
Code	Course Unit	Type	Hours /week	ECTS
851	Fruits and Vegetables Technology and Quality Control			
852	Grain & Pastry Products Technology & Quality Control.			
853	Fats and Oils Technology and Quality Control			
854	Meat and Meat Products Technology & Quality Control			
855	Food Additives & Sweeteners Technology & Quality Control			
856	Fish and Fish Products Technology and Quality Control			
857	Fermented Foods Technology & Quality Control			
858	Wine and Distillates Technology & Quality Control			

C= Compulsory course unit
 E/C = Elective compulsory course unit
 ECTS= European Credit Transfer System



TRIKALA BRANCH



TRIKALA - the city

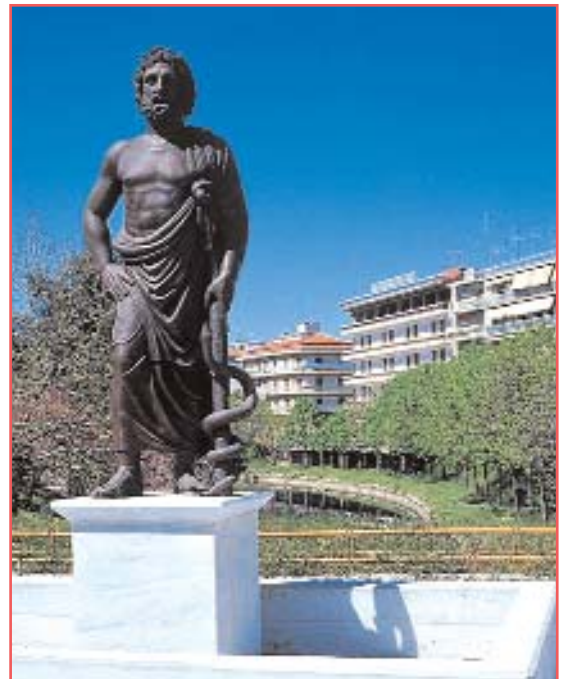
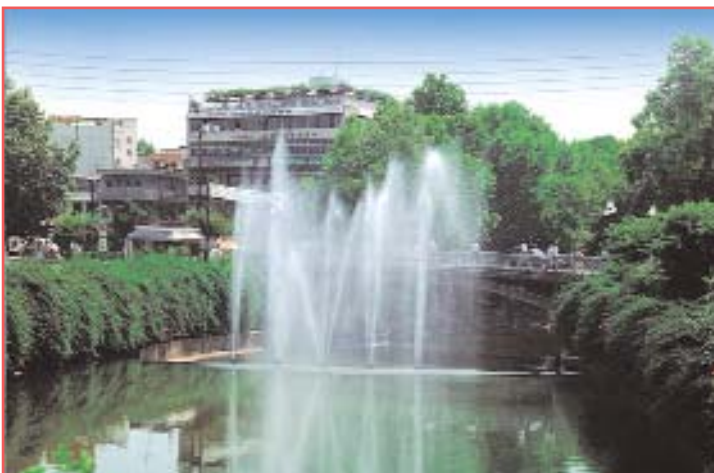
The history of **Trikala city** has lasted for many centuries. It has been inhabited since the 3rd millennium B.C. and originally was called Trikki. It was known in ancient times as the home of Asclepius, for its participation in the Trojan War with thirty ships, and for its famous horses which are depicted in the Athens Parthenon sculptures. From the 5th till the 4th century B.C. it circulated silver and bronze coins. During historical times the city suffered from the Goths, Bulgarians, Normans and Franks, and was occupied by the Serbs in the 14th century A.D. The monasteries in Meteora were built during the Serb occupation. During the Turkish occupation, Trikala was the capital of Thessaly, while the city played a leading role in the Agricultural Movement establishing the first Agricultural Cooperative in 1906. The impressive Frourio (fortress) with the Tower and the Clock which dominates the northern part of the city witnesses, with its alterations and modifications, the long history of the city, and the changes it underwent through ancient, Byzantine, medieval and Turkish occupation years.

The ancient temple dedicated to Asclepius is located beneath the Frourio Hill at the old city precinct, Varousi, while only one part has been revealed by archaeological excavations. Varousi is a picturesque precinct with impressive mansions that exhibit elaborate architectural styles with long eaves, and its narrow pebbled streets have been known as "Sakaflias' narrows" from Vassilis Tsitsanis' songs. The paved neighbourhood in the Agricultural Market place is the right place for evening entertainment. Koursoum Mosque in the south, right next to St Constantine church, is a monument of eastern-Islamic architecture and it is protected by UNESCO. It was built in the 16th century by the famous architect Sinan Pasha and its

distinctive dome is semi-spherical and covered with lead.

A constant point of reference in Trikala and the connecting ring of the city is Lithaios River with its verdant banks linked with many bridges and full of tall trees. Matsopoulos Mill is an important historical- industrial monument which was built in 1884 and impresses visitors with the stone external decoration and the wooden internal structures. A real gem and an architectural monument for the city is the Railway Station building which was constructed by a French company in 1886.

A stroll in the zoological garden can turn into an unforgettable experience. Many animals are sheltered in the beautiful natural environment of the garden, in Profitis Elias Hill which is covered in pine-trees and also houses the homonymous cross-shaped little church on top.



Museums

The Archaeological Collection of Trikki with monuments from the 6th millennium till the late Byzantine years is housed in the museum below the Frourio. The Municipal Folklore Museum is housed in a restored civil architecture building and its collections include exhibits from the 18th till the mid-twentieth century. The Centre of Music composed by Trikala originated composers was established in order to protect and preserve the rich music tradition of the area that has given birth to famous composers, lyrics writers and singers. The Municipal Historic Athletic Museum is located at Kastrakideio, a revival classical building.

Various aspects of life in the history of the city are presented at the Kliafa Centre of History and Culture, which is housed at the old Kliafa ice-making Factory, and includes an industrial museum, a traditional printing workshop, an old pharmacy, etc. The Metropolis Museum, on the other hand, comprises a lot of ecclesiastical relics, folklore exhibits and a large collection of historical books.



TRIKALA - the prefecture

Trikala prefecture is rich in ecclesiastical monuments: unique Meteora and a large number of Byzantine and late Byzantine monuments with brilliant architecture, remarkable murals and impressive sculptures, as well as the invaluable treasure of holy relics. Meteora, on the gigantic rocks constitute the second most important monastic complex in the Greek sovereign after Agion Oros. The first steps in the history of meteoric monastic life can not be traced in centuries, but the beginning of the monastic community can be set in the 11th century, while in the 14th century more that twenty monasteries were built and operated on the rocks. Today only six monasteries continue the original strict tradition of

orthodox monastic life: the monasteries of Big Meteoro or Metamorfoseos, Varlaam, St Stephen's, Holy Trinity, St Nikolas Anapafsa, and Rousanou.

Special thanks to Trikala Municipality and Prefecture for providing the information and photographs of the city and the region.

www.trikala.gr
<http://web.trikala.gr>



TRIKALA BRANCH

Trikala Branch consists of one academic department:

- ◆ **Department of Building Renovation & Restoration**



Department of Building Renovation & Restoration

The department was established with the Presidential Decree 211/1-10-2004 and was financed by the 3rd Community Support Framework. Instruction started in the winter semester of academic year 2005-2006. Human resources comprise one (1) permanent Professor, three (3) technicians, three (3) administrators working at the secretariat and approximately twenty-five (25) Scientific and Laboratorial Associates under contract.

Field of Study

Studies at the department cover the application of technical sciences to the study, supervision and construction of maintenance and building restoration projects. They combine the development of the appropriate theoretical background with high standard laboratory and practical training. The department focuses on restoration technology and on renovation, maintenance, support and repair techniques, while mainly conducting technological research and developing the know-how and innovations in the respective professional fields. At the same time, a more general educational program is provided which broadens the students' horizons and sets the foundations for their scientific and professional maturity in order to be able to deal with the particularly complex problems involved in the protection, preservation-maintenance, restoration, promotion and revival of both monuments and the natural environment in our country.

Career Opportunities

On completion of their studies, Technologist - Engineers for Building Renovation and Restoration will have acquired the

necessary scientific and technological knowledge and skills in order to become professionals and, either as freelancers or in collaboration with other scientists such as architects, civil engineers, topographers, mechanical engineers, electrical and chemical engineers, archaeologists and conservers of works of art, both in the public and in the private sector, to work in the study, research and application of technology to special maintenance and building restoration works and projects, and particularly in the following fields and activities:

- ◆ Supervision and works for the maintenance and restoration of modern and historical buildings.
- ◆ Study or supervision of studies on works, as members of organized services in the public sector or private offices.
- ◆ Carrying out or supervising studies as individual technicians on private and public works related to their expertise.
- ◆ Surveying and documentation of Buildings and Monuments with the use of traditional or modern technical methods.
- ◆ Carrying out or participating in expert reports on works and on the assessment of market offers.
- ◆ Covering posts of head executives, as defined by law, for the running of businesses and services of their expertise.
- ◆ Organising technical works of their expertise.
- ◆ Collecting and analyzing laboratory findings in labs testing material strength, material technology, construction etc.
- ◆ Application of new technology to the above sections with the use of computers.
- ◆ Development of new technology for the maintenance of buildings and the restoration of the building materials, in collaboration with scientists from other scientific fields.



Contact Details

+30-24310-23602

secry- renov@teilar.gr

Trikala Branch, T.E.I. of Larissa, 1C Argonafton st, 42100 Trikala, POBox 34826, Greece

www.teilar.gr

1st Semester				
Code	Course Unit	Type	Hours /week	ECTS
101	Mathematics	C	4	4
102	Building I	C	5	5
103	Statics I	C	6	7
104	History of Architecture I	C	3	4
105	Architectural Drawing	C	6	6
106	Monumental Topography of Byzantine & Post-Byzantine Monuments in the Thessalian Region	C	3	4
Total			27	30

2nd Semester				
Code	Course Unit	Type	Hours /week	ECTS
201	Building II	C	5	5
202	Statics II	C	6	7
203	Technology of Building Materials	C	5	6
204	History of Architecture II	C	3	4
205	Christian Art	C	3	3
206	Computers I	C	4	5
Total			26	30

3rd Semester				
Code	Course Unit	Type	Hours /week	ECTS
301	Topography	C	5	5
302	Reinforced Concrete Constructions	C	5	6
303	History of Architecture III	C	3	4
304	Architectural Design I	C	7	8
305	Theory and History of Restoration	C	2	2
306	Surveying I	C	5	5
Total			27	30

4th Semester				
Code	Course Unit	Type	Hours /week	ECTS
401	Geo-technical Engineering in Constructions - Soil Mechanics	C	4	4
402	Building Restoration	C	5	6
403	Anti-seismic Protection of Buildings Restoration of Buildings damaged by earthquake	C	4	5
404	Architectural Design II	C	5	6
405	Computers II (AutoCAD)	C	4	4
406	Surveying II	C	5	5
Total			27	30

5th Semester				
Code	Course Unit	Type	Hours /week	ECTS
501	Interior Architecture	C	6	6
502	Restoration and Re-use of Buildings	C	6	8
503	Restoration of Historical Buildings I	C	7	8
504	Space Thermodynamics	C	2	3
505	Foreign Language (Technical Terminology)	C	3	3
506	Special Buildings	C	2	2
Total			26	30

6th Semester				
Code	Course Unit	Type	Hours /week	ECTS
601	Theory of Greek Traditional Architecture	C	3	3
602	Remodelling and Revival of Historical Centres and Blocks I	C	7	8
603	Restoration of Historical Buildings II	C	7	8
604	Electromechanical and Plumbing Systems	C	5	5
605	Technical Legislation	C	2	3
606	Occupational Health & Safety	C	2	3
Total			26	30

7th Semester				
Code	Course Unit	Type	Hours /week	ECTS
701	Restoration & Re-use of Historical Buildings	C	8	9
702	Remodelling and Revival of Historical Centers & Blocks II	C	8	9
703	Architecture of Historical Technical Works	C	4	4
704	Lighting Technology - Sound Technology	C	3	4
705	Fire Protection of Buildings	C	3	4
Total			26	30

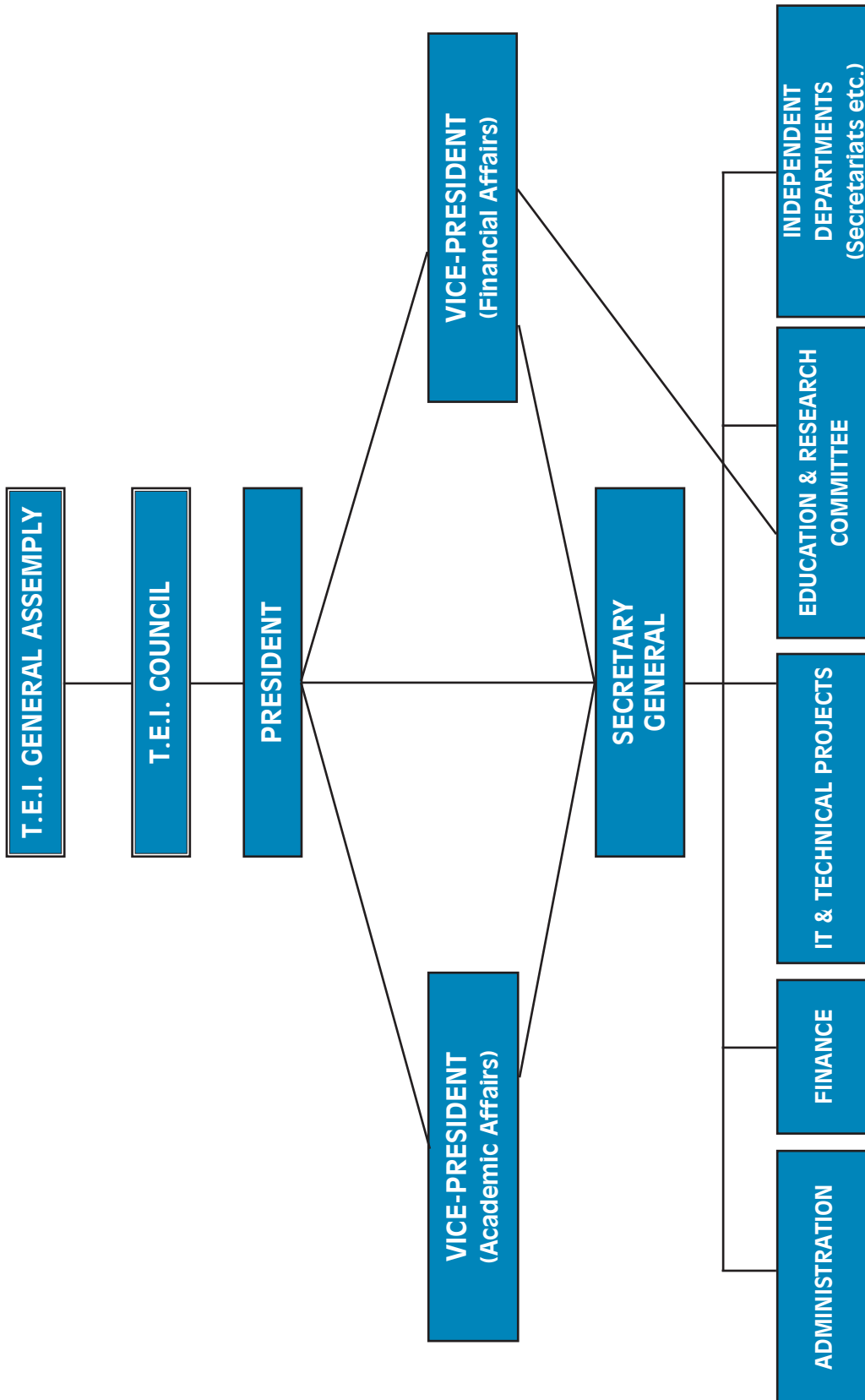
8th Semester				
Code	Course Unit	Type	Hours /week	ECTS
1	Degree Dissertation	C	4	15
2	Work Placement (24 weeks/6 months)	C	-	15
Total			4	30

C= Compulsory course unit

E/C = Elective compulsory course unit

ECTS= European Credit Transfer System

Administrative Organisation Chart



Education & Research Committee

Education & Research Committee was established in 1989. The main mission of the committee is:

- ◆ to support and enhance research activities at T.E.I of Larissa
- ◆ to develop cooperation with productive agents in the area
- ◆ to provide for the continual education and training of T.E.I. personnel

At present approximately 25 research programmes are being implemented at the institution, covering all fields of scientific knowledge such as Archimedes Programme with a variety of actions on entrepreneurship, equal opportunities, research promotion, etc. These programmes are funded by the Committee. A number of researches and studies are undertaken by the committee for account of organisations, enterprises and local authorities' agents.

The Special Account Office is responsible for the financial management of Education & Research Committee projects. The Special Account Office is also responsible for the financial management of all EU programmes implemented at the T.E.I of Larissa, such as Community Support Framework Programmes, etc.

Education & Research Committee is made up of one elected representative from each academic department and it is presided over by the Vice-President of Financial Affairs. A seven-member body is elected by the Committee to carry out the management.

Contact Details

+30-2410-684-414, +30-2410-626-396 (fax)
 research@teilar.gr
 T.E.I. of Larissa, 411 10 Larissa, Greece
 www.teilar.gr



Quality Assurance Unit

Tuition, research, studies and other services provided by Higher Education institutions are subject to continuous evaluation to the end of assuring and improving them in the framework of their mission. The evaluation consists in the systematic, documented and detailed assessment, marking and recording of the work of Higher Education institutions, with the use of objective criteria, and the critical analysis and establishment of failing and divergences in connection with their academic profile, objectives and mission.

On the basis of the evaluation results the academic institutions and the state adopt the necessary measures in order to assure and improve the quality of the work performed. Subject to evaluation are the academic units (Faculty or Department) and through them the entire institution. The evaluation is carried out in two stages: the first one involves self-evaluation procedures and the second one external evaluation by a committee of independent experts. The internal and external evaluation procedure is repeated every fourth year at the latest.

The Quality Assurance Unit was established at T.E.I. of Larissa under a General Assembly decision in 2007 in order to coordinate and support the institution evaluation procedures. Mission of QAU is to:

- ◆ Coordinate and support quality assurance and evaluation procedures at all levels in the institution,
- ◆ Draw up the Internal Report on the evaluation of the institution every two years, based on the annual internal

reports from the schools and academic departments,

- ◆ Draw up the Internal Report on the evaluation of the institution every four years,
- ◆ Promote the External evaluation procedures for every academic department every fourth year.

QAU is made up of three members of the Educational Staff, one joint representative of the remaining scientific and administrative staff, one representative of the undergraduate students and one representative of the postgraduate students, appointed by the relevant bodies. It is presided over by the Vice President of Academic Affairs of the institution.

Contact Details

+30-2410-684-215

quality-unit@teilar.gr

T.E.I. of Larissa, 411 10 Larissa, Greece

www.teilar.gr



Quick Reference Telephone Numbers

	Telephone		E-mail
President	+30-2410-684300		president@teilar.gr
Secretariat - President & Vice-Presidents	+30-2410-684506	+30-2410-670002	secry-president@teilar.gr
Vice-President (of Academic Affairs)	+30-2410-684215		v-president1@teilar.gr
Vice-President (of Finance Affairs)	+30-2410-684502		v-president2@teilar.gr
Secretary General	+30-2410-684203		secretary-g@teilar.gr
Personnel	+30-2410-684406		administration@teilar.gr
Finance	+30-2410-684202		finance@teilar.gr
IT and Technical Projects	+30-2410-684486		technical@teilar.gr
Centre of Foreign Languages & Physical Education - Director	+30-2410-684443		dir-flang@teilar.gr
School of Business & Economics - Director	+30-2410-684204		dir-sdo@teilar.gr
School of Business & Economics - Secretary	+30-2410-684233	+30-2410-613147	secry-sdo@teilar.gr
Dept of Accounting - Head	+30-2410-684239		head-account@teilar.gr
Dept of Business Administration - Head	+30-2410-684240		head-business@teilar.gr
Dept of Tourism Enterprises - Head	+30-2410-684243	+30-2410-684243	head-tourist@teilar.gr
Dept of Project Management - Head	+30-2410-684561		head-project@teilar.gr
School of Health Care Professions - Head	+30-2410-684205		dir-seyp@teilar.gr
School of Health Care Professions - Secretary	+30-2410-684253	+30-2410-684253	secry-seyp@teilar.gr
Dept of Medical Laboratories - Head	+30-2410-684267		head-medlab@teilar.gr
Dept of Nursing - Head	+30-2410-684256		head-nurse@teilar.gr
School of Agricultural Technology - Director	+30-2410-684206		dir-stef@teilar.gr
School of Agricultural Technology - Secretary	+30-2410-684272	+30-2410-613153	secry-steg@teilar.gr
Dept of Agricultural Machinery & Irrigation - Head	+30-2410-684284		head-machine@teilar.gr
Dept of Animal Production - Head	+30-2410-684367		head-animal@teilar.gr
Dept of Crop Production - Head	+30-2410-684282		head-plant@teilar.gr
School of Technological Applications - Director	+30-2410-684207		dir-steg@teilar.gr
School of Technological Applications - Secretary	+30-2410-684301	+30-2410-613249	secry-stef@teilar.gr
Dept of Electrical Engineering - Head	+30-2410-684302		head-electr@teilar.gr
Dept of Mechanical Engineering - Head	+30-2410-684305		head-engin@teilar.gr
Dept of Civil Engineering & Infrastructure - Head	+30-2410-684306		head-civil@teilar.gr
Dept of Informatics & Telecommunications Technology - Head	+30-2410-684399		head-cs@teilar.gr
Dept of Exact Sciences - Head	+30-2410-684383		head-gd@teilar.gr
Karditsa Branch - Director	+30-24410-80064	+30-24410-80065	dir-kard@teilar.gr
Karditsa Branch - Secretary	+30-24410-64729	+30-24410-71753	secry-kard@teilar.gr
Dept of Forestry & Environment Management - Head	+30-24410-41497		head-forest@teilar.gr
Dept of Wood & Furniture Design & Technology - Head	+30-24410-28499	+30-24410-72377	head-wood@teilar.gr
Dept of Food Technology - Head	+30-24410-40961		head-food@teilar.gr
Dept of Building Renovation & Restoration - Head	+30-24310-23602		head-renov@teilar.gr

- 1 Halls of Residence
 - 2 New Building A: Dept of Project Management, Dept of Informatics & Telecommunications Technology.
 - New Auditorium
 - 3 Dept of Tourism Enterprises
 - 4 Dept of Animal Production
 - 5 Farm
 - 6 Central Auditorium
 - 7 Dept of Informatics & Telecommunications Technology
 - 8 School of Business & Economics
Dept of Business Administration
Dept of Accounting
 - 9 School of Health Care Professions
Dept of Medical Laboratories
Dept of Nursing
 - 10 School of Agricultural Technology
Dept of Crop Production
Dept of Agricultural Machinery & Irrigation
 - 11 Dept of Crop Production - Greenhouses
 - 12 New Central Library
 - 13 Administration Building
 - 14 Central Library
 - 15 Dept of Exact Sciences
 - 16 Classrooms B'
 - 17 Classrooms A'
 - 18 School of Technological Applications
18A Dept of Electrical Engineering
18B Dept of Mechanical Engineering
18C Dept of Civil Engineering & Infrastructure
 - 19 Outdoor Sport Facilities
 - 20 Conference Centre
 - 21 Student Restaurant
 - 22 Multi-sport gymnasium - basketball / volleyball court & fitness centre.
- E Central Gate
(Regional motorway, from Larissa to Trikala)
- / Entrance - Querries
- EE Education & Research Committee
- DN Network Operations Centre
- CO Career Office
- H Central Hallway
- B Buss Stop
- T Taxi Stop
- P Parking lot

